



KOREEL CO., LTD.

·Head office and Factory : 48, Gaseok-ro, Seo-gu, Incheon, Korea [22819]

·The second factory : 884-2(Gunjang National Industrial Complex) Osikdo-dong Gunsan Jeolabukdo
Overseas Dept,DIR : +82-70-4010-3061
Fax : +82-32-584-6862
<http://www.koreel.com>
Korean alphabet domain : 호스릴, 케이블릴
E-mail : overseas@koreel.com



The Customers Create, KOREEL

KOREEL

Since 1991

www.koreel.com

Thank you for your attention and interest in KOREEL.

For over 30 years, since KOREEL Co.,Ltd is established on January 1991. Through wise judgement of executive team and helps of the skillful and devoted employees, we could manage our company continually by ourselves even though when we faced with a lot of challenges.

Through continuous investing R&D department and interest of our client, we could be survived in frontier markets of industrial reel.

Our company was established for substituting imported reels.

We always made our policies for solving our client's problems first than our revenue.

So, eventually, our company could have been forced small quantity batch production company.

By the way, we had been suffered from lots of financial problem and hard situation to manage small quantity batch production company before. But we consolidated the foundation to business with overseas markets from the basis of many experiences from hard situation. We have overcome from the hard situation. and now it is one of our strength in industrial reel market.

AEO-certificate (Authorized Economic Operator) is our big achievement for exporting our products to overseas markets safely. our company has been grown not only in technical skills and quality but also financial organization and scale of sales and fabrication.

As our web-site and brochure are shown, KOREEL's products are being applied all kind of products in various machine equipments and equipment elemental technologies. Furthermore, demand of the reels has been steadily increasing for applying as mechanical elements globally.

All over the world's clients have been cooperated with us and contributed the development of KOREEL's products. the world is big and huge to do business. That is our joyful and happiness for our business with our client and that is why we do our best for our clients

There is something to ask you.

We always look forward to your continued interest and encouragement. Then, we can maintain ourselves with earnest.

Thank you very much.

KOREEL Co., Ltd

President. Oh-Hyunkyu.



1991	01	Established SAMKOOK Industrial Co., Ltd.,
1991	06	Established a corporation of SAMKOOK Industrial Co., Ltd.,
1991	08	Selected as a developer of machinery parts and materials by Ministry of Commerce, Industry and Energy
1992	05	Registered as a supplier of subsidiary materials for KIA Motors Corps and HYUNDAI Motors
1993	02	Developed the Motor-Counted Cable Reel
1994	05	Registered as a supplier of GM DAEWOO Motors(SE31)
1999	11	Acquired ISO 9002 Certificate
2000	07	Designated as a 'Promising small and medium business for export' (No. 2003-30)
2000	11	Acquired CE (Hydraulic hose reel, Air reel)
2001	07	Finished joint development of one-stop welding carriage with KOSHA(Selected as an item of CLEAN project)
2002	09	Moving and enlarging the factory and office(Gajwa 3-dong, Seo-gu, Incheon
2003	11	Developed a Crane reel for harbour crane
2004	06	Completed the development of Rail System exhaust hose Reel (Patent No. 0451313)
2004	06	Developed the Water reel for balcony and veranda Water reel for balcony and veranda: Patent No.0451313
2005	07	Acquired CE certificate(Package Type Oil Hose Reel, Air Hose Reel N.S Type)
2005	11	Acquired ISO9001 Certificate
2006	12	Finished the development of Magnet Coupler Type Cable Reel
2007	02	Selected as a 'Promising small and medium business' by the Industrial Bank of Korea
2007	12	Acquired ISO 14001, Environment system Certificate
2007	12	Awarded the grand prize of the export promotion business(The prize of the mayor of Incheon metropolitan city
2009	03	Selected as an participant of 500 projects for the export business promotion(Small and Medium Business Administration)
2009	11	Won the award for \$1million export and the prize of the Minister of Knowledge Economy
2010	03	Registered the patent on the power supply cable reel for an excavator(No.10-09517715)
2010	04	Selected as the brand company guaranteed by KOTRA
2010	06	Registered a supplier of HYUNDAI Heavy Industries Co., Ltd.
2010	07	Completed the second factory in Gunsan(Factory site size: 6,611.50m ² - 884-2, Osik-dong(Inside of Gunjang industrial complex, Jeonbuk)
2010	11	Selected as one of the 100 key promotion companies by Korea Institute of Science and Technology Information(KISTI)
2011	04	Developed Electric-Excavator Arm Type (Patent 10-1031027)
2011	06	Acquired Certification of Company Laboratory
2012	12	Developed The inverter motor type cable reel
2013	07	Changed company name
2014	04	made a supply contract with Grainger, USA
2014	07	Obtained AEO certification
2015	03	Awarded 'Best Taxpayer Award' from the National Tax Service
2015	10	Awarded the 'Prime Minister's Award'
2015	11	Registered patent of power supply system for indoor purpose heavy construction equipment(No.10-1568676)
2015	12	Awarded certificate (Jungbu Regional Employment and Labor Administration)
2016	08	Registered patent of inverter control type Alternative Maritime Power system(AMP) (No. 10-1651954)
2016	11	Won the first prize in AEO Competitive Exhibition
2017	01	Developed & Launched new product of B2C(Home shower Reel, LED cable reel) Registered design(No.30-0822175)
2018	04	Acquired as a global SME by Ministry of SMEs and Startups
2018	10	Awarded Grand Prize for National Standardization by Minister of Trade, Industry and Energy
2019	05	Presidential Commendation Award for the Development of SMEs
2019	06	Certificate for Professional for Material and Technology Industry by the Development of SMEs
2019	07	Certificate for Promising Small and Medium Enterprise in Export by the Mistry of SMEs

History



Contents

Real Symbol of **KOREEL**

AIR HOSE REEL	05
- Enclosed Series	
- Open Series	
WATER HOSE REEL	11
- Enclosed Series	
- Open Series	
CABLE REEL	18
- Enclosed Series	
- Open Series	
- Portable Series	
OIL, GREASE & HIGH PRESSURE HOSE REEL	23
- Enclosed Series	
- Open Series	
OXYGEN, LPG GAS HOSE REEL	27
- Reel	
- Carrage	
EXHAUST HOSE REEL	30
SPRING BALANCER	33
AIR TUBE & HOSE	35
- Polyurethane Tube (PUT)	
- polyethylene Tube (PET)	
- Nylon Tube (NT)	
AIR COIL TUBE	36
- PU	
- PE	

Air Hose Reel Enclosed Type



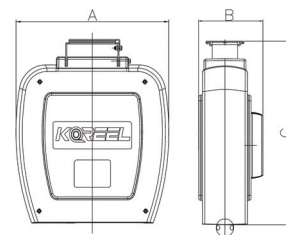
Air Hose Reel can be conveniently employed in the industrial sites using pressed air. It is designed with a flexible air hose and a special spring, which prevents it from leaking and maintains its rolling power. Additionally, it has simple structure to install and use with ease. It also raises the work efficiency and keep work places organized.

PAR Series(Material : ABS plastic case)

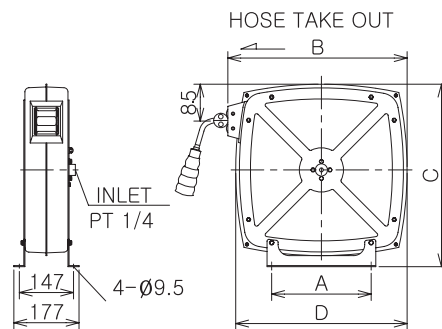
- Application : Construction site, Industrial site, Laboratory
- Features : Automatic rewind
- Installation : Wall mounting type



(Application number of design : 30-2010037976)



Model	Hose			W,P Max (kg/cm ²)	External Dimensions (mm)		
	Material	I,D-O,D(Ø)	L (M)		A	B	C
PAR-810	PU	8-12	10	15	440	360	177
PAR-815	PU	8-12	15	15	440	360	177
PAR-820	PU	8-12	20	15	440	360	177
PAR-830	PU	8-12	27	15	505	421	177
PAR-1110	PU	11-16	10	15	440	360	177
PAR-1115	PU	11-16	15	15	505	421	177
PAR-1120	PU	11-16	20	15	505	421	177
PAR-810F	PVC	8-13	10	15	440	360	177
PAR-815F	PVC	8-13	15	15	440	360	177
PAR-820F	PVC	8-13	20	15	505	421	177
PAR-915F	PVC	9,5-17	15	15	505	421	177



EAR Series(Material : Steel case)

- Application : Construction site, Industrial site, Laboratory
- Features : Automatic rewind
- Installation : Wall mounting type

Model	Hose			W,P Max (kg/cm ²)	External Dimensions (mm)				Weight (kg)
	Material	I,D (mm)	L (M)		A	B	C	D	
EAR-810	PU	8	10	15	190	426	435	405	12,7
EAR-815	PU	8	15	15	190	426	435	405	14,2
EAR-820	PU	8	20	15	190	426	435	405	17
EAR-825	PU	8	25	15	190	426	435	405	21
EAR-830	PU	8	30	15	190	426	435	405	23
EAR-1110	PU	11	10	15	190	426	435	405	16
EAR-1115	PU	11	15	15	190	426	435	405	20
EAR-1120	PU	11	20	15	190	426	435	405	23



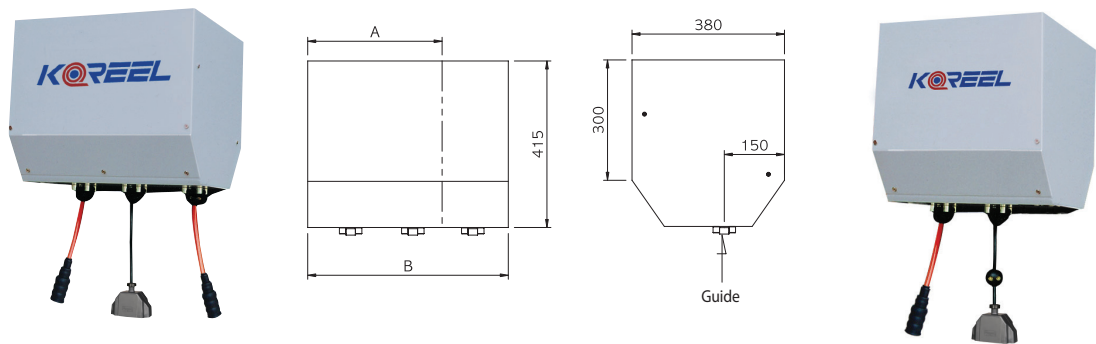
Air Hose Reel

Enclosed Type

It features that various auto reels are built in an integrated case, which make it tidy and efficient the workplace where a power cord and compressed air are used. Each auto reel is an easy to use and consists of polyurethane braided hose and high durability spring. It is the most preferred product by professional service centers.

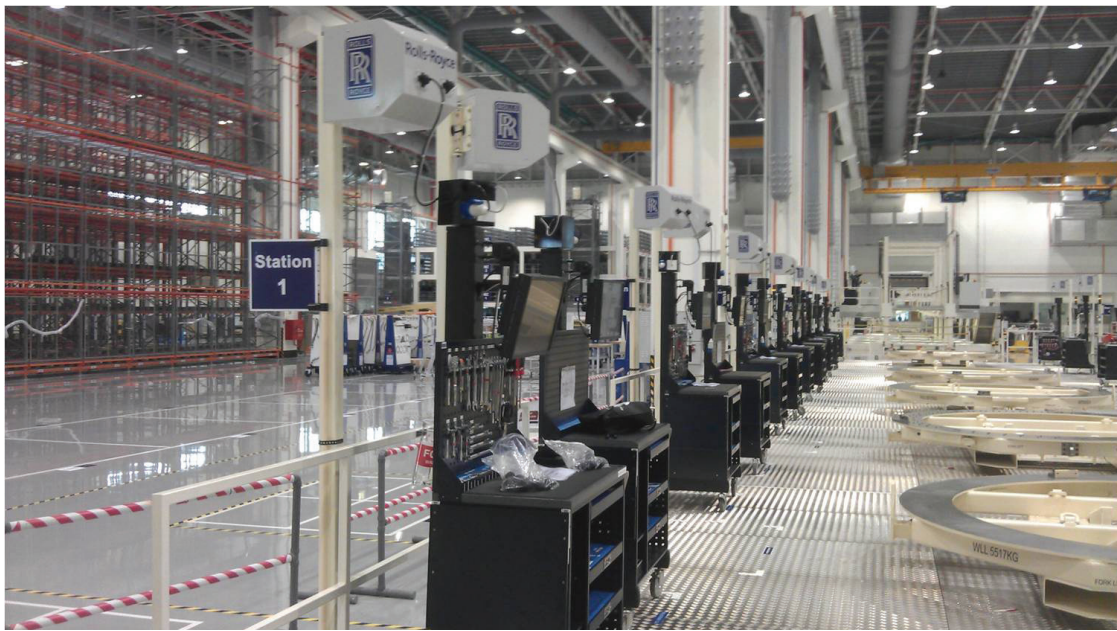
CR Series(Material : Steel Case)

- Application : Car service center, Industrial site, Laboratory
- Features : All-in-one steel case, Polyurethane braided hose
- Installation : Wall, Ceiling (Within 4M height, If installed over 4M, it could not rewind.)



Model	Air Hose Reel			Cord reel		External Dimensions (mm)		Component	Weight (kg)
	Material	I.D (mm)	L (M)	Cable	L (M)	A	B		
CR-815-2	PU	8	15	VCTX1,5x3C	15	335	—	AirX1, Electricity1	21
CR-815-2S	PU	8	15	VCTX1,5x3C	15	335	—	AirX2	20
CR-815-3	PU	8	15	VCTX1,5x3C	15	—	500	AirX2, Electricity1	30,3

※ Combination of configurations on demand.



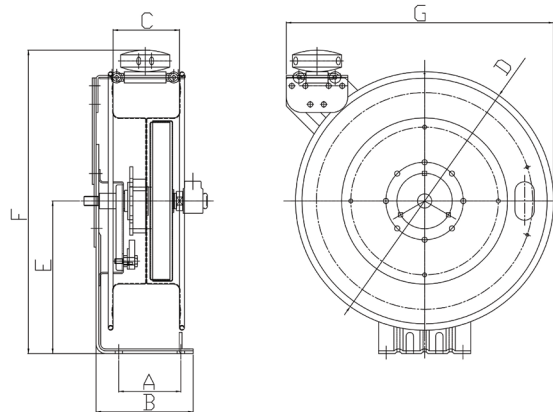
Air Hose Reel

Open Type



SJ Series (Air Reel)

- Application : Construction site, industrial site, Laboratory
- Features : Compact size, Automatic rewind, Single steel frame
- Installation : Wall, Ceiling

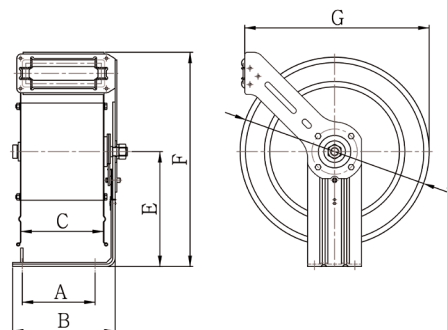


Model	Hose			W.P Max (kg/cm ²)	External Dimensions (mm)							Weight (kg)
	Material	I.D (mm)	L (M)		A	B	C	D	E	F	G	
SRA-810	PU,PP	8	10	15	101	158	105	Ø420	248	493	435	17
SRA-815	PU,PP	8	15	15	101	158	105	Ø420	248	493	435	18
SRA-820	PU,PP	8	20	15	101	158	110	Ø500	288	578	517	19
SRA-1110	PU,PP	11	10	15	101	158	105	Ø420	248	493	435	18
SRA-1115	PU,PP	11	15	15	101	158	105	Ø420	248	493	435	19
SRA-1120	PU,PP	11	20	15	101	158	110	Ø500	288	578	517	24

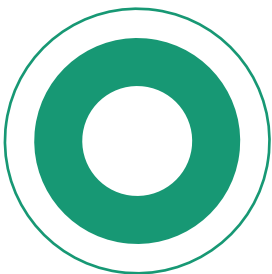


KR Series (Air Reel/Water Reel)

(* The reel body color can be changed)

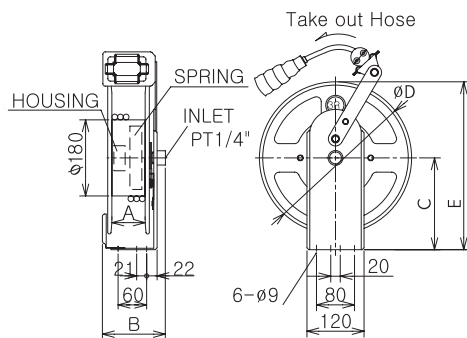
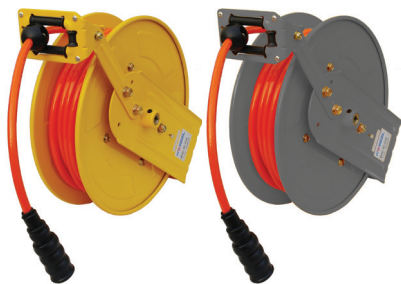


Model	Hose			W.P Max (kg/cm ²)	External Dimensions (mm)							Weight (kg)
	Material	I.D (mm)	L (M)		A	B	C	D	E	F	G	
KRSUS-1316	PVC	13	16	20	135	190	150	Ø350	213	400	342	15
KRSUS-920	PVC	9	20	120	135	190	150	Ø350	213	400	342	14
KRA-1120	PU,PP	11	20	15	135	190	150	Ø350	213	400	342	15



Air Hose Reel

Open Type



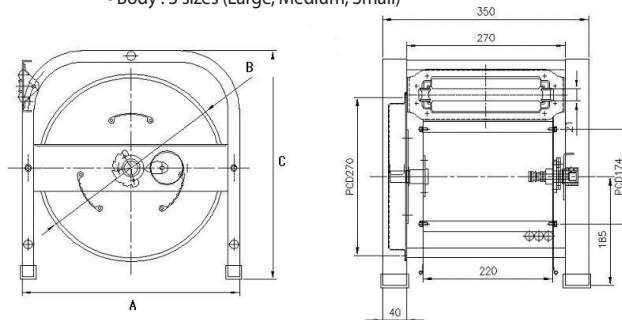
RA-N Series

- Application : Car service center, Industrial site, Laboratory
- Features : Light weight frame, Flexible hose, Easy installation
- Installation : Wall, Ceiling (Within 4M height, If installed over 4M, it could not rewind.)
(If the total order quantity is over than 500 sets, The reel body color can be customised as buyer's request)

Model	Hose			W.P Max (kg/cm ²)	External Dimensions (mm)					Weight (kg)
	Material	I.D (mm)	L (M)		E	A	B	C	D	
RA-610N	PU	6,5	10	15	353	76	135	193	320	6,4
RA-615N	PU	6,5	15	15	353	76	135	193	320	7
RA-620N	PU	6,5	20	15	353	76	135	193	320	7,6
RA-625N	PU	6,5	25	15	353	76	135	193	320	8
RA-630N	PU	6,5	27	15	353	76	135	223	350	8,5
RA-810N	PU	8	10	15	353	76	135	193	320	6,7
RA-815N	PU	8	15	15	353	76	135	193	320	7,5
RA-820N	PU	8	20	15	353	76	135	193	320	8
RA-825N	PU	8	25	15	398	76	135	223	350	8,3
RA-830N	PU	8	27	15	398	76	135	223	350	8,5
RA-1110N	PU	11	10	15	353	76	135	193	320	7,6
RA-810NF	Synthetic Rubber	8	10	15	353	76	135	193	320	8
RA-815NF	Synthetic Rubber	8	15	15	353	76	135	193	320	8,4
RA-820NF	Synthetic Rubber	8	20	15	353	76	135	193	320	9
RA-825NF	Synthetic Rubber	8	25	15	398	76	135	223	350	11,7

B Series

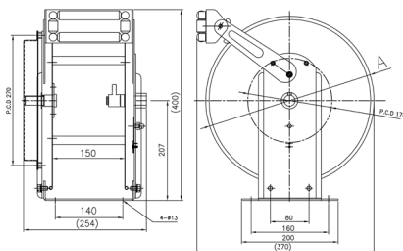
- Application : Construction site, Industrial site, Laboratory
- Features : Automatic rewind, Solid frame
- Installation : Movable
- Body : 3 sizes (Large, Medium, Small)



Model	Hose			W.P Max (kg/cm ²)	External Dimensions (mm)			Weight (kg)
	Material	I.D (mm)	L (M)		A	B	C	
RA-630B	PU	6,5	30	15	370	320	390	13,5
RA-830B	PU	8	30	15	370	320	390	15
RA-840B	PU	8	40	15	450	350	460	16
RA-850B	PU	8	50	15	450	350	460	21
RA-1120B	PU	11	20	15	370	320	390	14
RA-1130B	PU	11	30	15	370	320	390	16,4
RA-1150B	PU	11	50	15	450	400	460	24

Air Hose Reel

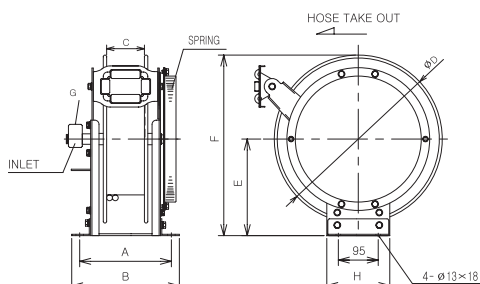
Open Type



ST Series

- Application : Car service center, Industrial site, Laboratory
- Features : Light weight frame, Flexible synthetic rubber hose
- Installation : Wall, Ceiling (Within 4M height, If installed over 4M, it could not rewind.)

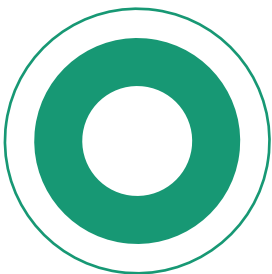
Model	Hose			W,P Max (kg/cm ²)	External Dimensions (mm)	Weight (kg)
	Material	I,D (mm)	L (M)		A	
RA-820ST	PU	8	20	15	320	11,7
RA-830ST	PU	8	30	15	320	13,5
RA-1115ST	PU	11	15	15	320	10,5
RA-1120ST	PU	11	20	15	320	11,7
RA-1125ST	PU	11	25	15	350	11,7
RA-1310ST	PVC	13	10	20	350	11
RA-1315ST	PVC	13	15	20	350	12



SK Series

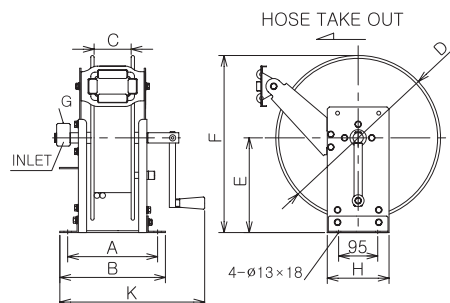
- Application : Large and medium sized service center, Industrial site
- Features : Solid frame, Long-lasting sealing, Powerful spring
- Installation : Wall, Ceiling (Within 4M height, If installed over 4M, it could not rewind.)

Model	Hose			W,P Max (kg/cm ²)	External Dimensions (mm)								Weight (kg)
	Material	I,D (mm)	L (M)		A	B	C	D	E	F	G	H	
RA-1320	Synthetic Rubber	13	20	20	278	318	150	450	260	485	PT1/2"	150	27
RA-1325	Synthetic Rubber	13	25	20	278	318	150	500	290	540	PT1/2"	150	30
RA-1330	Synthetic Rubber	13	30	20	278	318	150	500	290	540	PT1/2"	150	32,4
RA-1340	Synthetic Rubber	13	40	20	338	378	210	500	290	540	PT1/2"	200	40
RA-1350	Synthetic Rubber	13	50	20	338	378	210	500	290	540	PT1/2"	200	45
RA-1610	Synthetic Rubber	16	10	20	278	318	150	450	260	485	PT1/2"	150	26
RA-1615	Synthetic Rubber	16	15	20	278	318	150	450	260	485	PT1/2"	150	29
RA-1620	Synthetic Rubber	16	20	20	278	318	150	500	290	540	PT1/2"	150	32
RA-1625	Synthetic Rubber	16	25	20	338	378	210	500	290	540	PT1/2"	200	36
RA-1630	Synthetic Rubber	16	30	20	338	378	210	500	290	540	PT1/2"	200	40
RA-1640	Synthetic Rubber	16	40	20	338	378	210	550	315	590	PT1/2"	200	45
RA-1910	Synthetic Rubber	19	10	20	338	378	210	450	290	515	PT3/4"	200	28,7
RA-1915	Synthetic Rubber	19	15	20	338	378	210	450	290	515	PT3/4"	200	34
RA-1920	Synthetic Rubber	19	20	20	338	378	210	500	290	540	PT3/4"	200	38
RA-1925	Synthetic Rubber	19	25	20	338	378	210	550	315	590	PT3/4"	200	42
RA-1930	Synthetic Rubber	19	30	20	338	378	210	550	315	590	PT3/4"	200	45
RA-2510	Synthetic Rubber	25	10	20	338	378	210	450	290	515	PT1"	200	35
RA-2515	Synthetic Rubber	25	15	20	338	378	210	500	315	565	PT1"	200	38
RA-2520	Synthetic Rubber	25	20	20	408	448	280	500	315	565	PT1"	200	43,6
RA-2525	Synthetic Rubber	25	25	20	408	448	280	550	345	620	PT1"	200	48,6
RA-2530	Synthetic Rubber	25	30	20	408	448	280	550	345	620	PT1"	200	50,5



Air Hose Reel

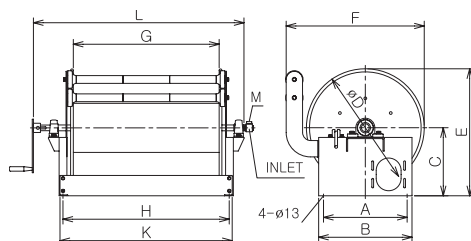
Open Type



RM Series Manual Rewind

- Application : Large and medium sized service center, Industrial site
- Features : Solid frame, Manual rewind
- Installation : Fixed to the floor

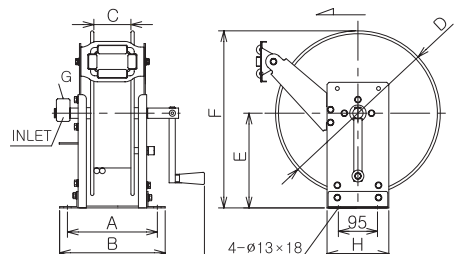
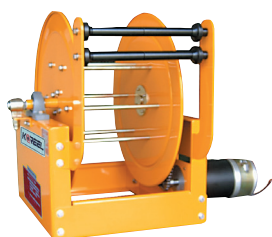
Model	Hose			W.P Max (kg/cm ²)	External Dimensions (mm)										Weight (kg)
	Material	I.D (mm)	L (M)		A	B	C	D	E	F	G	H	K		
RM-1320	Synthetic Rubber	13	20	20	278	318	150	450	260	485	PT1/2"	150	420	17	
RM-1330	Synthetic Rubber	13	30	20	278	318	150	500	290	540	PT1/2"	150	420	20,4	
RM-1340	Synthetic Rubber	13	40	20	338	378	210	500	290	540	PT1/2"	200	480	23	
RM-1350	Synthetic Rubber	13	50	20	338	378	210	500	290	540	PT1/2"	200	480	27	
RM-1620	Synthetic Rubber	16	20	20	278	318	150	500	290	540	PT1/2"	150	420	20	
RM-1630	Synthetic Rubber	16	30	20	338	378	210	500	290	540	PT1/2"	200	480	25,2	
RM-1640	Synthetic Rubber	16	40	20	338	378	210	550	315	590	PT1/2"	200	480	32	
RM-1650	Synthetic Rubber	16	50	20	408	448	280	550	345	620	PT1/2"	200	550	40	
RM-1920	Synthetic Rubber	19	20	20	338	378	210	500	290	540	PT3/4"	200	480	26	
RM-1930	Synthetic Rubber	19	30	20	338	378	210	550	315	590	PT3/4"	200	480	34	
RM-1940	Synthetic Rubber	19	40	20	408	448	280	550	345	620	PT3/4"	150	550	41	
RM-2520	Synthetic Rubber	25	20	20	408	448	280	500	315	565	PT1"	200	550	30	
RM-2530	Synthetic Rubber	25	30	20	408	448	280	550	345	620	PT1"	200	550	36	



ASB Series Manual Rewind

- Application : Large and medium sized service center, Construction site, Industrial site, Specially-equipped vehicle
- Features : Solid frame, Permanent sealing, Manual rewind
- Installation : Floor, Vehicles

Model	Hose			W.P Max (kg/cm ²)	External Dimensions (mm)											Weight (kg)
	Material	I,D (mm)	L (M)		A	B	C	D	E	F	G	H	K	L	M	
ASB-13100	Synthetic Rubber	13	100	20	430	480	325	550	600	660	500	605	635	840	PT1/2"	35
ASB-16100	Synthetic Rubber	16	100	20	430	480	350	600	650	710	600	720	750	940	PT1/2"	41
ASB-1950	Synthetic Rubber	19	50	20	430	480	325	550	600	660	500	605	635	840	PT3/4"	35
ASB-2550	Synthetic Rubber	25	50	20	430	480	350	600	650	710	600	720	750	940	PT1"	41

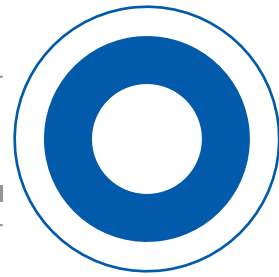


ASBM Series Motor Rewind

- Application : Large and medium sized service center, Construction site, Industrial site, Specially-equipped vehicle
- Features : Solid frame, Long-lasting sealing, Electric motor type (AC/DC)
- Installation : Floor, Vehicles

Model	Hose			W.P Max (kg/cm ²)	External Dimensions (mm)											Weight (kg)	Voltage
	Material	I.D (mm)	L (M)		A	B	C	D	E	F	G	H	K	L	M		
ASBM-13200	Synthetic Rubber	13	200	20	430	480	350	600	650	710	650	770	800	960	PT1/2"	46	DC24V
ASBM-16100	Synthetic Rubber	16	100	20	430	480	350	600	650	710	600	720	750	910	PT1/2"	46	DC24V
ASBM-1950	Synthetic Rubber	19	50	20	430	480	325	550	600	600	600	720	750	910	PT3/4"	40	DC24V
ASBM-19100	Synthetic Rubber	19	100	20	430	480	350	600	650	710	650	770	800	960	PT3/4"	46	DC24V
ASBM-2550	Synthetic Rubber	25	50	20	430	480	350	600	650	710	600	720	750	910	PT1"	46	DC24V
ASBM-25100	Synthetic Rubber	25	100	20	430	480	380	650	705	760	750	870	900	1060	PT1"	53	DC24V

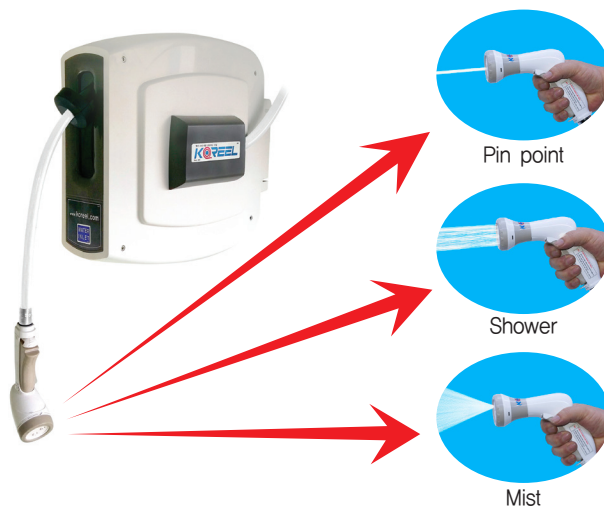
Water Hose Reel Enclosed Type for Garden



This product is optimized by gardening. depending on models, the hose can be taken out until 15M~25M. the range of spray is Max.10M. Therefore, this product can be sprayed the water Max.25M~35M by one way and 50M~70M by both-way And also regarding the material of pipe conduit(shaft) it is consisted by stainless steel. So only the clean water can be supplied by our reel product.

Especially, the spray type can be adjusted by 3 ways of type. It can be utilized in various area.

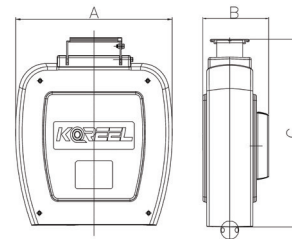
PWR Series(Material : ABS plastic case)



(Application number of design : 30-20100037976)

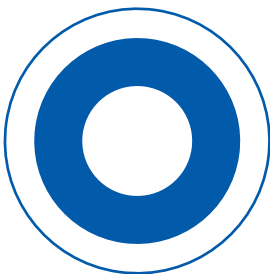
* Water gun* (3 type of adjusting)

- Application : Gardening, Cleaning
- Features : Automatic rewind
- Installation : Wall mounting type



Model	Material	Hose		W.P. (BAR)	Size H x D x W	Usage
		I,D-O,D(Ø)	L (M)			
PWR-815	Non-toxic PVC hose	8-12	15	15	440*360*177	Cleaning, Drinking
PWR-820	Non-toxic PVC hose	8-12	20	15	440*360*177	
PWR-825	Non-toxic PVC hose	8-12	25	15	440*360*177	





Water Hose Reel **Enclosed Type for Kitchen**

This water hose reel meets the requirement of HACCP.

We would like to recommend this reel to use in the kitchen to maintain the clean condition and arrangement.

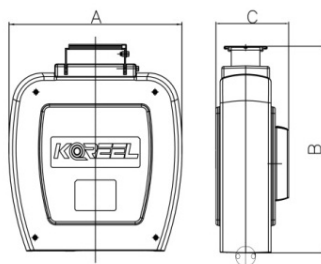
Hose is manufactured by KOREEL and consisted of non-toxic material.

Water flow can be adjusted pin point and spray mode by water nozzle.

Water nozzle covered by NBR rubber which is strong on cleanser and chemicals

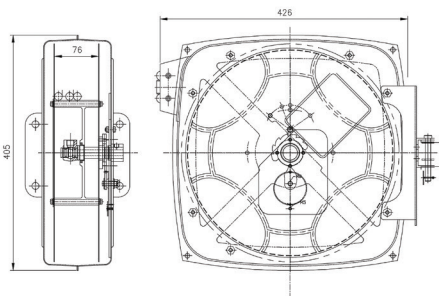
(The mode of PWR-1307SH can be used with steam for high temperature and the hose is made in France.)

PWR Series(Material : ABS plastic case)



(Application number of design : 30-20100037976)

Model	Hose			W.P (BAR)	Size H x D x W	Usage	Desc.
	Material	I.D-O.D(Ø)	L (M)				
PWR-1110	Non-toxic PVC hose	11	10	15	440*360*177	Drinking Cleaning	For cold water
PWR-1115	Non-toxic PVC hose	11	15	15	505*421*177		
PWR-1120	Non-toxic PVC hose	11	20	15	505*421*177		
PWR-1310	Non-toxic PVC hose	13	10	15	505*421*177	Drinking, Cleaning Less 70°C	For hot water
PWR-1110W	Non-toxic PVC hose	11	10	15	440*360*177		
PWR-1115W	Non-toxic PVC hose	11	15	15	505*421*177		
PWR-1120W	Non-toxic PVC hose	11	20	15	505*421*177		
PWR-1310W	Non-toxic PVC hose	13	10	15	505*421*177		
PWR-1307SH	EPDM	13	7	10	505*421*177	Drinking, Cleaning, sterilizing, Less 160°C	For steam



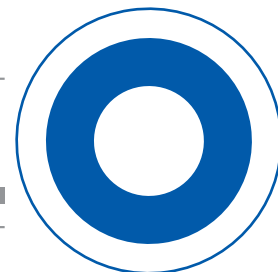
SWR Series(Material : Steel case)

- Application : Gardening, Cleaning
- Features : Automatic rewind
- Installation : Wall mounting type

Model	Hose			W.P (BAR)	Size H x D x W	Usage
	Material	I.D-O.D(Ø)	L (M)			
SWR-815	Non-toxic PVC hose	8-12	15	15	440*360*177	Cleaning, Drinking (Less than 70°C)
SWR-820	Non-toxic PVC hose	8-12	20	15	440*360*177	
SWR-825	Non-toxic PVC hose	8-12	25	15	440*360*177	

Water Hose Reel

Stainless Steel Reel for Kitchen / Restaurant



Built-out Spring TWA-STS Series

for Wall and Ceiling-Mounted

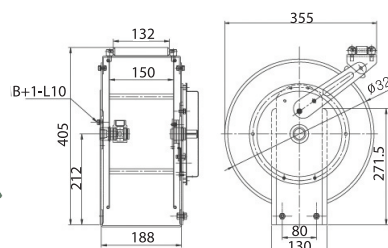


For Cold Water

For Hot Water

For Steam
(For Drinking and Food)

For Steam
(For Cleaning)



Features of cold water hose reel

We manufactured the hose and also it is only possible to be used by cold water. Especially, the hose material is non-toxic material. So it can be used for drinking. And the reel body material is consisted by stainless steel material. This product is highly durable for oil.

Features of hot water hose reel

The hose is not hardened until +70°C. And regarding the outer hose material, it is durable material for oil. It is also can be used for drinking and the reel body material is consisted by stainless steel material. We can guarantee it as a manufacturer.

Features of steam hose reel

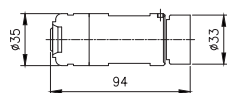
This steam hose is imported product which is certified from FDA and Europe associations. Now it is using in the factories which are applying to drinking water, milk processing and steam even disinfection equipment. the working temperature is from -30°C to 160°C.



For Hot Water



For Cold Water



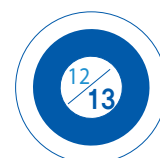
Accessories

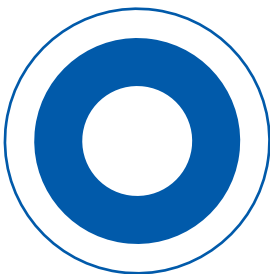
(Hanger bracket, anchor bolt. Nut*4EA, Connecting pin, Hose clamp*2EA, Inlet hose 1.5m)



- French Quality Assurance Association certified products

Model	Hose			W.P (BAR)	Weight (kg)	Usage	Description
	Material	I.D (Ø)	L (M)				
TWA-1308	PVC	13	8	20	10	Drinking Cleaning	For Cold Water
TWA-1310	PVC	13	10	20	11		
TWA-1312	PVC	13	12	20	12		
TWA-1315	PVC	13	15	20	15		
TWA-1308W	PVC	13	8	20	11	Drinking Cleaning	For Hot Water, Less than 70°C
TWA-1310W	PVC	13	10	20	12		
TWA-1312W	PVC	13	12	20	13		
TWA-1315W	PVC	13	15	20	15		
TWA-1308TRH	EPDM	13	8	10	15	Drinking Cleaning	For Steam, Less than 160°C
TWA-1312TRH	EPDM	13	12	10	18		
TWA-1315TRH	EPDM	13	15	10	20		
TWA-1310VH	EPDM	13	10	10	15	Cleaning	For Steam, Less than 110°C
TWA-1315VH	EPDM	13	15	10	16		
TWA-1310SEH	NBR	13	10	10	15	Drinking, Cleaning, Disinfection	For Steam, Less than 100°C
TWA-1315SEH	NBR	13	15	10	16		





Water Hose Reel

Stainless Steel Reel for Kitchen / Restaurant

Built-out Spring TWA-STS Series for Floor-Mounted



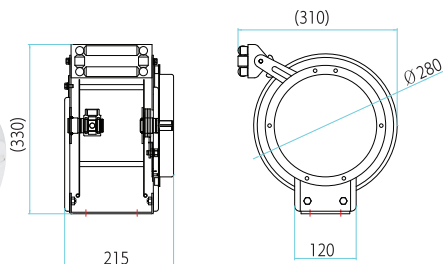
For cold water



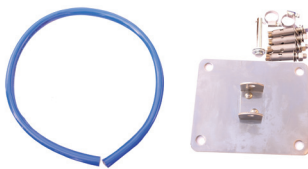
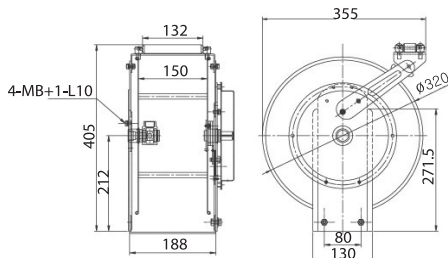
For Hot water



For Steam



Accessories for grounding type hose reel
(bolts x nuts 4EA, Inlet hose 1.5m)



Accessories for hot water hose reel
(for 100°C)
(Hanger bracket, anchor bolt.
Nut*4EA, Connecting pin, Hose clamp*2EA,
Inlet hose 1.5m)



Cleaning reel for fried food

Hot water hose reel for 100°C

This product is for cleaning by approx. 100°C high temperature.

It is mainly used on the space which is not be washed by high temperature water. (Such as glued residue by oil.)

The hose material is consisted by rubber. So it is impossible for using by drinking water.

Features of hot water hose reel

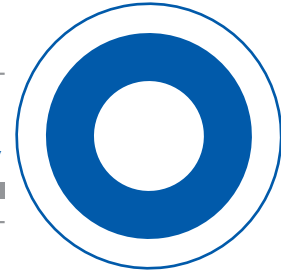
This reel is used by franchise and restaurants for using cold, hot water, steam

The mounting space is mainly on the ground. And depending on usage, the production size can be customized (by small type).

Model	Hose			W.P (BAR)	Weight(kg)	Usage	Desc.
	Material	I,D-O,D(Ø)	L (M)				
STWA-1315	PVC	13	15	10	15	Drinking, Cleaning	For Cold Water
STWA-1315W	PVC	13	15	10	18		For Hot Water, Less than 70°C
STWA-908SEH	NBR,SBR	9	8	20	12	Cleaning	For Hot Water, Less than 100°C
STWA-1315SEH	NBR,SBR	13	15	20	24		For Steam, Less than 160°C
STWA-1315TRH	EPDM	13	15	10	20	Drinking, Cleaning, Disinfection	For Steam, Less than 100°C
STWA-1315VH	EPDM	13	15	10	20		

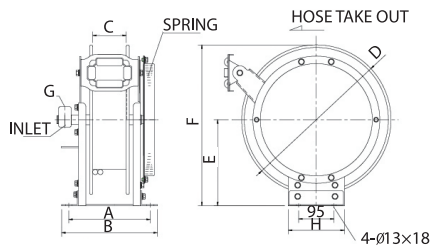
Water Hose Reel

Stainless Steel Water Hose Reel for Heavy Duty



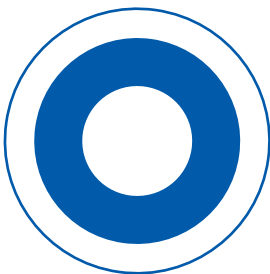
RWA-STS Series (Spring built -out Type)

- High pressure water hose reel.
- Stainless steel material.
- It can be serviced various applications such as high pressure water reel, cold & hot water reel...etc.
- Customized reel is available.



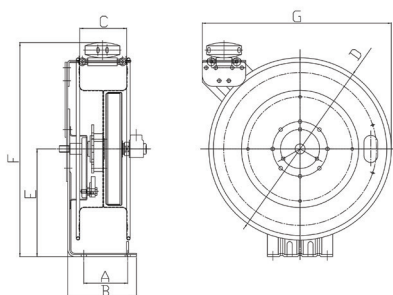
Model	Hose			W.P Max (kg/cm ²)	External Dimensions (mm)								Remark
	Material	I.D (mm)	L (M)		A	B	C	D	E	F	G	H	
RWA-1320STS	Synthetic Rubber	13	20	20	278	318	150	450	260	485	PT1/2"	150	Housing built-out type
RWA-1325STS	Synthetic Rubber	13	25	20	278	318	150	500	290	540	PT1/2"	150	
RWA-1330STS	Synthetic Rubber	13	30	20	278	318	150	500	290	540	PT1/2"	150	
RWA-1340STS	Synthetic Rubber	13	40	20	338	378	210	500	290	540	PT1/2"	200	
RWA-1610STS	Synthetic Rubber	16	10	20	278	318	150	450	260	485	PT1/2"	150	
RWA-1615STS	Synthetic Rubber	16	15	20	278	318	150	450	260	485	PT1/2"	150	
RWA-1620STS	Synthetic Rubber	16	20	20	278	318	150	500	290	540	PT1/2"	150	
RWA-1625STS	Synthetic Rubber	16	25	20	338	378	210	500	290	540	PT1/2"	200	
RWA-1630STS	Synthetic Rubber	16	30	20	338	378	210	500	290	540	PT1/2"	200	
RWA-1640STS	Synthetic Rubber	16	40	20	338	378	210	550	315	590	PT1/2"	200	
RWA-1910STS	Synthetic Rubber	19	10	20	338	378	210	450	290	515	PT3/4"	200	Housing built-in type
RWA-1915STS	Synthetic Rubber	19	15	20	338	378	210	450	290	515	PT3/4"	200	
RWA-1920STS	Synthetic Rubber	19	20	20	338	378	210	500	290	540	PT3/4"	200	
RWA-1925STS	Synthetic Rubber	19	25	20	338	378	210	550	315	590	PT3/4"	200	
RWA-1930STS	Synthetic Rubber	19	30	20	338	378	210	550	315	590	PT3/4"	200	
RWA-2510STS	Synthetic Rubber	25	10	20	338	378	210	450	290	515	PT1"	200	
RWA-2515STS	Synthetic Rubber	25	15	20	338	378	210	500	315	565	PT1"	200	
RWA-2520STS	Synthetic Rubber	25	20	20	408	448	280	500	315	565	PT1"	200	
RWA-2525STS	Synthetic Rubber	25	25	20	408	448	280	550	345	620	PT1"	200	
RWA-2530STS	Synthetic Rubber	25	30	20	408	448	280	550	345	620	PT1"	200	

※ The above hoses are for cold water. The hose for hot water (Less 70°C or Less 100°C) is additional specifications.



Water Hose Reel Open Type

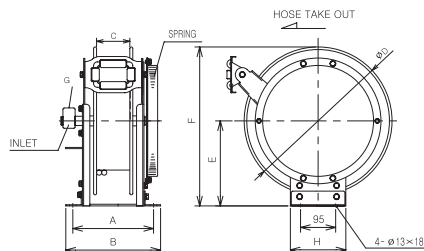
It is selectable between an automatic and manual rewind typed water hose reel. According to use and function, it ranges from a corrosion resistance stainless hose reel to hose reel for food and beverage; and water reel for high pressure and for balcony. Reels for specially-equipped vehicles and fire engines are made by customer order.



SJ Series (Water Reel)

- Application : Construction site, industrial site, Laboratory
- Feature : Compact size, Automatic rewind, Single steel frame
- Installation : Wall, Ceiling

Model	Hose			W.P Max (kg/cm ²)	External Dimensions (mm)							Weight (kg)
	Material	I.D (mm)	L (M)		A	B	C	D	E	F	G	
SRWA-910	Synthetic Rubber	9,5	10	20	101	158	105	Ø420	248	493	435	17
SRWA-915	Synthetic Rubber	9,5	15	20	101	158	105	Ø420	248	493	435	18
SRWA-920	Synthetic Rubber	9,5	20	20	101	158	110	Ø500	288	578	517	19
SRWA-1310	Synthetic Rubber	13	10	20	101	158	105	Ø420	248	493	435	18
SRWA-1315	Synthetic Rubber	13	15	20	101	158	105	Ø420	248	493	435	19
SRWA-1320	Synthetic Rubber	13	20	20	101	158	110	Ø500	288	578	517	24

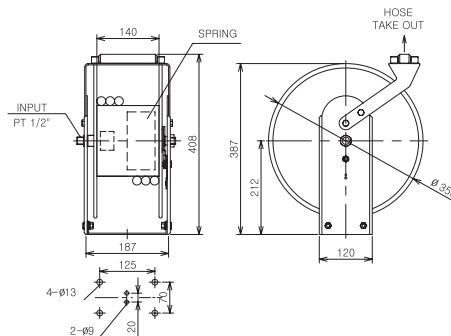
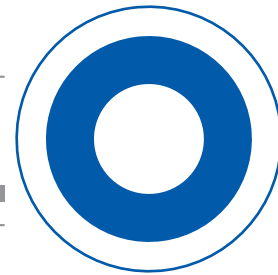


RWA-SK Series

- Application : Food factory, Construction site, Industrial site
- Features : Solid frame, Long-lasting sealing, Powerful spring
- Installation : Wall, Floor (Within 4M height, If installed over 4M, it could not rewind.)

Model	Hose			W.P Max (kg/cm ²)	External Dimensions (mm)								Weight (kg)
	Material	I.D (mm)	L (M)		A	B	C	D	E	F	G	H	
RWA-1320	Synthetic Rubber	13	20	20	278	318	150	450	260	485	PT1/2"	150	27
RWA-1325	Synthetic Rubber	13	25	20	278	318	150	500	290	540	PT1/2"	150	30
RWA-1330	Synthetic Rubber	13	30	20	278	318	150	500	290	540	PT1/2"	150	32,4
RWA-1340	Synthetic Rubber	13	40	20	338	378	210	500	290	540	PT1/2"	200	40
RWA-1610	Synthetic Rubber	16	10	20	278	318	150	450	260	485	PT1/2"	150	26
RWA-1615	Synthetic Rubber	16	15	20	278	318	150	450	260	485	PT1/2"	150	29
RWA-1620	Synthetic Rubber	16	20	20	278	318	150	500	290	540	PT1/2"	150	32
RWA-1625	Synthetic Rubber	16	25	20	338	378	210	500	290	540	PT1/2"	200	36
RWA-1630	Synthetic Rubber	16	30	20	338	378	210	500	290	540	PT1/2"	200	40
RWA-1640	Synthetic Rubber	16	40	20	338	378	210	550	315	590	PT1/2"	200	45
RWA-1910	Synthetic Rubber	19	10	20	338	378	210	450	290	515	PT3/4"	200	28,7
RWA-1915	Synthetic Rubber	19	15	20	338	378	210	450	290	515	PT3/4"	200	34
RWA-1920	Synthetic Rubber	19	20	20	338	378	210	500	290	540	PT3/4"	200	38
RWA-1925	Synthetic Rubber	19	25	20	338	378	210	550	315	590	PT3/4"	200	42
RWA-1930	Synthetic Rubber	19	30	20	338	378	210	550	315	590	PT3/4"	200	45
RWA-2510	Synthetic Rubber	25	10	20	338	378	210	450	290	515	PT1"	200	35
RWA-2515	Synthetic Rubber	25	15	20	338	378	210	500	315	565	PT1"	200	38
RWA-2520	Synthetic Rubber	25	20	20	408	448	280	500	315	565	PT1"	200	43,6
RWA-2525	Synthetic Rubber	25	25	20	408	448	280	550	345	620	PT1"	200	48,6
RWA-2530	Synthetic Rubber	25	30	20	408	448	280	550	345	620	PT1"	200	50,5

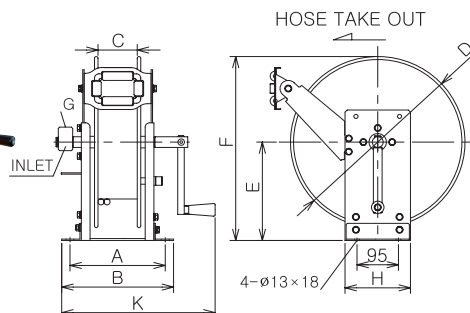
Water Hose Reel Open Type



TWA-TT Type

- Application : Food factory, Kitchen, Other clean worksite
- Features : Built-in spring, Powder-blast painting (Steel), Fixed bracket
- Installation : Wall (Within 3M height, If installed over 4M, it could not rewind.)

Model	Hose			W.P Max (kg/cm ²)	Weight (kg)	Usage
	Material	I.D (mm)	L (M)			
TWA-1310T	NBR, SBR	13	10	9	12	For Cleaning
TWA-1315T	Synthetic Rubber	13	15	9	14	For Cleaning



RWM-SK Series Manual Rewind

- Application : Food factory, Construction site, Industrial site
- Features : Solid frame, Manual rewind type
- Installation : Fixed to the floor

Model	Hose			W.P Max (kg/cm ²)	External Dimensions (mm)										Weight (kg)
	Material	I.D (mm)	L (M)		A	B	C	D	E	F	G	H	K		
RWM-1320	Synthetic Rubber	13	20	20	278	318	150	450	260	485	PT1/2"	150	420	17	
RWM-1330	Synthetic Rubber	13	30	20	278	318	150	500	290	540	PT1/2"	150	420	20,4	
RWM-1340	Synthetic Rubber	13	40	20	338	378	210	500	290	540	PT1/2"	200	480	23	
RWM-1350	Synthetic Rubber	13	50	20	338	378	210	500	290	540	PT1/2"	200	480	27	
RWM-1615	Synthetic Rubber	16	15	20	278	318	150	450	260	485	PT1/2"	150	480	19	
RWM-1620	Synthetic Rubber	16	20	20	278	318	150	500	290	540	PT1/2"	150	420	20	
RWM-1625	Synthetic Rubber	16	25	20	338	378	210	500	290	540	PT1/2"	200	420	20	
RWM-1630	Synthetic Rubber	16	30	20	338	378	210	500	290	540	PT1/2"	200	480	25,2	
RWM-1640	Synthetic Rubber	16	40	20	338	378	210	550	315	590	PT1/2"	200	480	32	
RWM-1650	Synthetic Rubber	16	50	20	408	448	280	550	345	620	PT1/2"	200	550	40	
RWM-1915	Synthetic Rubber	19	15	20	338	378	210	450	290	515	PT3/4"	200	480	26	
RWM-1920	Synthetic Rubber	19	20	20	338	378	210	500	290	540	PT3/4"	200	480	26	
RWM-1930	Synthetic Rubber	19	30	20	338	378	210	550	315	590	PT3/4"	200	480	34	
RWM-1940	Synthetic Rubber	19	40	20	408	448	280	550	345	620	PT3/4"	200	550	41	
RWM-2515	Synthetic Rubber	25	15	20	338	378	210	500	315	565	PT1"	200	480	30	
RWM-2520	Synthetic Rubber	25	20	20	408	448	280	500	315	565	PT1"	200	550	30	
RWM-2530	Synthetic Rubber	25	30	20	408	448	280	550	345	620	PT1"	200	550	36	

Cable Reel

PER / EER

ALE-SK . ALM-SK

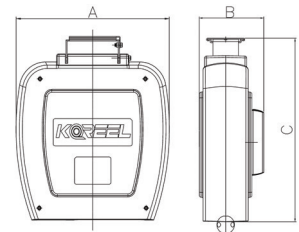
PER Series(Material : ABS plastic case)



(Application number of design : 30-2010037976)

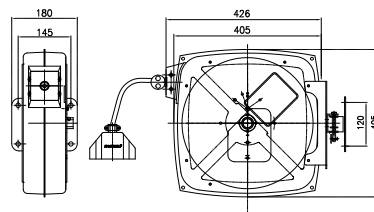


LED light for
checking power supply



- Application : All sorts of electrical work places(Service center, Factories, Laboratory)
- Features : Steel package type, Hanger bracket included
- Installation : Wall, Ceiling(Within 3M height, If installed over 4M, it could not rewind.)

Model	Cable			Maximum Capacity Max (V×A)	External Dimensions (mm)			Weight (kg)
	Material	I,D-O,D(Ø)	L (M)		A	B	C	
PER-110	VCTF	1,5SQ×3C	10	220V-10A	440	177	360	9,8
PER-115	VCTF	1,5SQ×3C	15	220V-10A	440	177	360	10,1
PER-120	VCTF	1,5SQ×3C	20	220V-10A	505	177	421	11,2
PER-130	VCTF	1,5SQ×3C	30	220V-10A	505	177	421	12,1
PER-210	VCTF	2,5SQ×3C	10	220V-15A	440	177	360	10,3
PER-215	VCTF	2,5SQ×3C	15	220V-15A	440	177	360	10,8
PER-220	VCTF	2,5SQ×3C	20	220V-15A	505	177	421	12,2
PER-230	VCTF	2,5SQ×3C	30	220V-15A	505	177	421	13,5



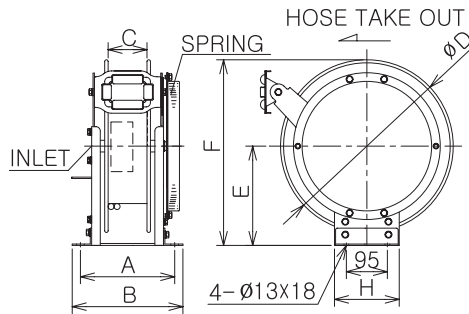
EER Series(Material : Steel case)

- Application : All sorts of electrical work places(Service center, Factories, Laboratory)
- Features : Steel package type, Hanger bracket included
- Installation : Wall, Ceiling(Within 3M height, If installed over 4M, it could not rewind.)

Model	Cable		Maximum Capacity Max (V×A)	Weight (kg)	Remark
	Cable Specifications	L (M)			
EER-110	VCTF-1,5 SQ×3C, Outlet	10	220V×10A	12	For Indoor
EER-115	VCTF-1,5 SQ×3C, Outlet	15	220V×10A	12	For Indoor
EER-120	VCTF-1,5 SQ×3C, Outlet	20	220V×10A	14	For Indoor
EER-210	VCTF-2,5 SQ×3C, Outlet	10	220V×15A	12	For Indoor
EER-215	VCTF-2,5 SQ×3C, Outlet	15	220V×15A	14	For Indoor
EER-110L	VCTF-1,5 SQ×3C, Halogen Light	10	220V×10A	12	For Indoor
EER-115L	VCTF-1,5 SQ×3C, Halogen Light	15	220V×10A	12	For Indoor
EER-120L	VCTF-1,5 SQ×3C, Halogen Light	20	220V×10A	14	For Indoor

Cable Reel

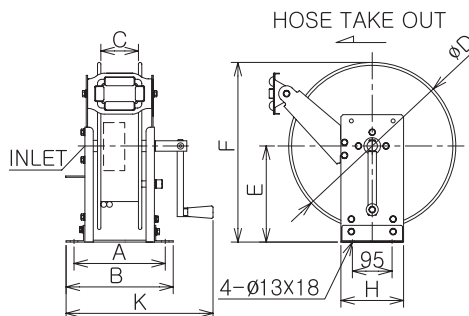
Open Type



ALE-SK Series

- Application : Operation cable for industrial site, For power supply
- Features : Solid frame, High durable slip ring, Manual rewind
- Installation : Wall, Floor (Within 4M height, If installed over 4M, it could not rewind.)

Model	Cable		Maximum Capacity Max (V×A)	External Dimensions (mm)							Weight (kg)	Remark
	Cable Specifications	L (M)		A	B	C	D	E	F	G		
ALE-415-3	VCTF-4.0 SQ×3C	15	380V×15A	238	278	110	400	230	430	150	25,6	For Indoor
ALE-420-3	VCTF-4.0 SQ×3C	20	380V×15A	238	278	110	400	230	430	150	28,6	For Indoor
ALE-425-3	VCTF-4.0 SQ×3C	25	380V×15A	238	278	110	450	260	485	150	32	For Indoor
ALE-430-3	VCTF-4.0 SQ×3C	30	380V×15A	238	278	110	450	260	485	150	36	For Indoor
ALE-615-3	VCTF-6.0 SQ×3C	15	380V×30A	238	278	110	400	230	430	150	27	For Indoor
ALE-620-3	VCTF-6.0 SQ×3C	20	380V×30A	238	278	110	450	260	485	150	30	For Indoor
ALE-625-3	VCTF-6.0 SQ×3C	25	380V×30A	238	278	110	500	290	540	200	33,5	For Indoor
ALE-630-3	VCTF-6.0 SQ×3C	30	380V×30A	278	318	150	500	290	540	200	37	For Indoor
ALE-1015-3	VCTF-10 SQ×3C	15	380V×40A	278	318	150	400	230	430	150	32	For Indoor
ALE-1020-3	VCTF-10 SQ×3C	20	380V×40A	278	318	150	450	260	485	150	37	For Indoor
ALE-1025-3	VCTF-10 SQ×3C	25	380V×40A	278	318	150	500	290	540	200	42	For Indoor
ALE-1030-3	VCTF-10 SQ×3C	30	380V×40A	278	318	150	500	290	540	200	46	For Indoor



ALM-SK Series Manual Rewind

- Application : Operation cable for industrial site, For power supply
- Features : Solid frame, High durable slip ring, Manual rewind
- Installation : Wall, Floor (Within 4M height, If installed over 4M, it could not rewind.)

Model	Cable		Maximum Capacity Max (V×A)	External Dimensions (mm)								Weight (kg)	Remark
	Cable Specifications	L (M)		A	B	C	D	E	F	H	K		
ALM-420-3	VCTF-4.0 SQ×3C	20	380V×15A	238	278	110	400	230	430	150	380	16,6	For Indoor
ALM-430-3	VCTF-4.0 SQ×3C	30	380V×15A	238	278	110	450	260	485	150	380	21,5	For Indoor
ALM-440-3	VCTF-4.0 SQ×3C	40	380V×15A	238	278	110	450	260	485	200	380	24,5	For Indoor
ALM-450-3	VCTF-4.0 SQ×3C	50	380V×15A	278	318	150	450	260	485	200	420	29,5	For Indoor
ALM-620-3	VCTF-6.0 SQ×3C	20	380V×30A	238	278	110	450	260	485	150	380	21	For Indoor
ALM-630-3	VCTF-6.0 SQ×3C	30	380V×30A	278	318	150	500	290	540	200	420	23	For Indoor
ALM-640-3	VCTF-6.0 SQ×3C	40	380V×30A	278	318	150	450	260	485	200	420	27,5	For Indoor
ALM-650-3	VCTF-6.0 SQ×3C	50	380V×30A	278	318	150	500	290	540	200	420	32,4	For Indoor
ALM-1020-3	VCTF-10 SQ×3C	20	380V×40A	278	318	150	450	260	485	150	420	27	For Indoor
ALM-1030-3	VCTF-10 SQ×3C	30	380V×40A	278	318	150	500	290	540	200	420	32	For Indoor
ALM-1040-3	VCTF-10 SQ×3C	40	380V×40A	338	378	210	450	260	485	200	480	36	For Indoor
ALM-1050-3	VCTF-10 SQ×3C	50	380V×40A	338	378	210	450	260	485	200	480	40	For Indoor

Cable Reel

(Cord Reel)

PM

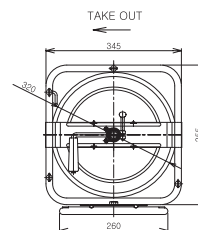
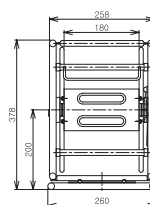
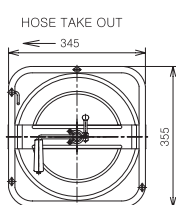
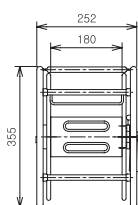
ALE-B, CF, ALE-N

This products is a portable cord reel for safe electric work and convenience. After use, it can be easily rewinded by using the manual handle, which has the advantage of being able to continue the work immediately in the next work. The cable is durable and can be mount variety of cable thicknesses and lengths. Manual handle is assembled with unique folding handle and provides easy utilization.

PM Series

Manual Rewinding and Portable Cord reel

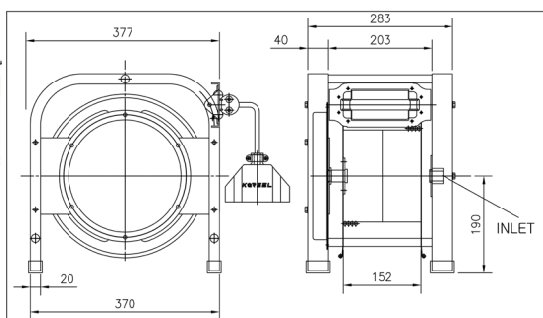
- Application : Construction, interior site (for power tools), General industrial site, Lab site
- Features : Solid frame, powder coating to prevent corrosion, Easy to move and store with manual handle. Can be mounted brakes, various thicknesses and lengths on demands



PM Reel (Normal type)

PM Reel (Swivel type)

Model	Cable		Maximum Capacity Max (V×A)	Weight (kg)	Remark
	Cable Specifications	L (M)			
EPM-130	VCTF 1.5SQ×3C, With Socket	30	220V×10A	7,5	For Indoor
EPM-140	VCTF 1.5SQ×3C, With Socket	40	220V×10A	8,0	For Indoor
EPM-150	VCTF 1.5SQ×3C, With Socket	50	220V×10A	8,5	For Indoor
EPMR-130	VCTF 1.5SQ×3C, With Socket	30	220V×10A	7,5	For Indoor
EPMR-140	VCTF 1.5SQ×3C, With Socket	40	220V×10A	8,0	For Indoor
EPMR-150	VCTF 1.5SQ×3C, With Socket	50	220V×10A	8,5	For Indoor



ALE-B Series

- Application : Mobile work site (Construction sites, General factory and industrial sites, Laboratories)
- Features : Solid frame, powder coating to prevent corrosion, Easy to move and store with manual handle. Can be mounted brakes, various thicknesses and lengths on demands

Model	Cable		Maximum Capacity Max (V×A)	Weight (kg)	Remark
	Cable Specifications	L (M)			
ALE-120B	VCTF 1.5SQ×3C, With Socket	20	220V×10A	17	For Indoor
ALE-130B	VCTF 1.5SQ×3C, With Socket	30	220V×10A	18	For Indoor
ALE-220B	VCTF 2.5SQ×3C, With Socket	20	220V×15A	20	For Indoor
ALE-230B	VCTF 2.5SQ×3C, With Socket	30	220V×15A	22	For Indoor

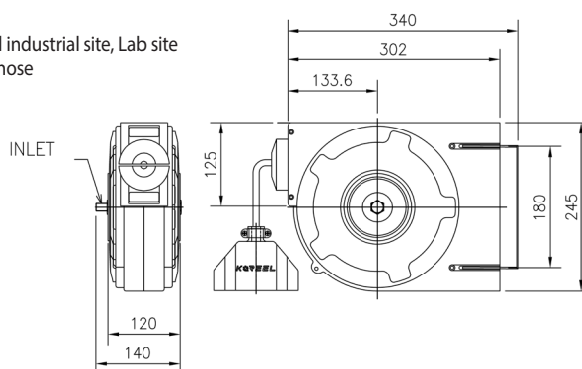
Cable Reel Cord Reel



This product is a portable cord reel for safe electric work and convenience. After use, it can be easily rewinded by using the manual handle, which has the advantage of being able to continue the work immediately in the next work. The cable is durable and can be mount variety of cable thicknesses and lengths. Manual handle is assembled with unique folding handle and provides easy utilization.

CF Series

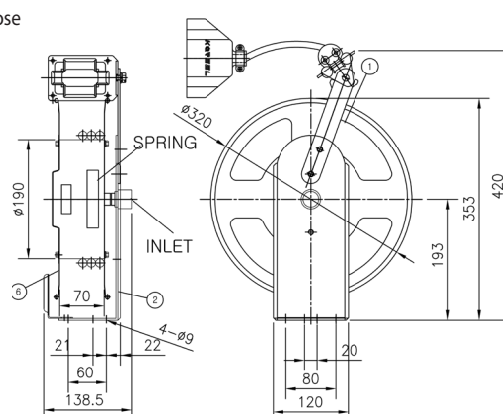
- Application : Auto maintenance shop, General industrial site, Lab site
- Features : Lightweight frame, Flexible rubber hose
- Installation : Wall, Ceiling and Floor



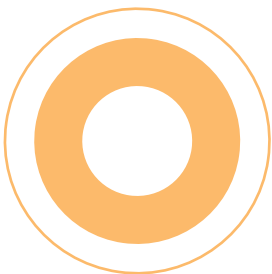
Model	Cable		Maximum Capacity Max (V×A)	Weight (kg)	Remark
	Cable Specifications	L (M)			
CF-108	VCTF 1.5SQ×3C	10	220V×10A	5,7	For Indoor

ALE-N Series

- Application : Auto maintenance shop, General industrial site, Lab site
- Features : Lightweight frame, Flexible rubber hose
- Installation : Wall, Ceiling and Floor



Model	Cable		Maximum Capacity Max (V×A)	Weight (kg)	Remark
	Cable Specifications	L (M)			
ALE-110N	VCTF 1.5SQ×3C, With Socket	10	220V×10A	7,8	For Indoor
ALE-115N	VCTF 1.5SQ×3C, With Socket	15	220V×10A	8,5	For Indoor
ALE-120N	VCTF 1.5SQ×3C, With Socket	20	220V×10A	9,3	For Indoor
ALE-130N	VCTF 1.5SQ×3C, With Socket	30	220V×10A	10	For Indoor
ALE-210N	VCTF 2.5SQ×3C, With Socket	10	220V×15A	9	For Indoor

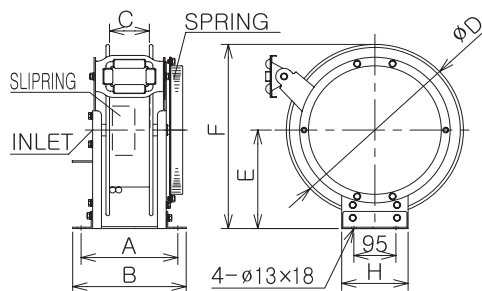


Arc Welding Reel

Arc Welding Reel

Welder capacity and length options are available for arc welding.

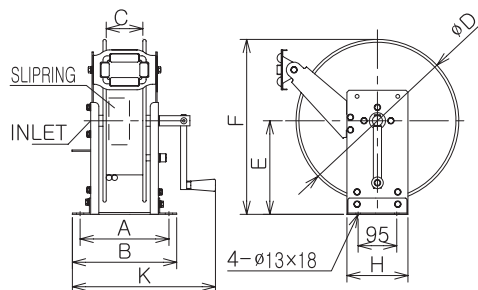
Welding rod holder type is default and can be used for grounding depending on demands.



ARC-A Series

- Application : Electric welding site and etc.
- Features : Solid frame, Automatic rewind, High capacity current collector.
- Installation : Wall and Floor (Within 4M height, If mounted over 4M, it could not rewind.)

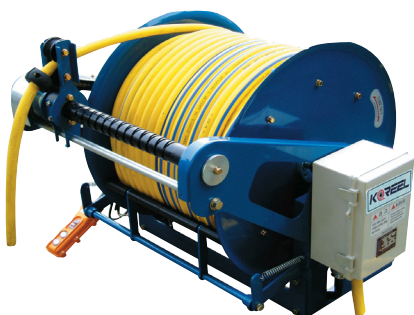
Model	Cable		Allowable Current (A)	External Dimensions (mm)							Weight (kg)	Remark
	Cable Specifications	L (M)		A	B	C	D	E	F	G		
ARCA-2520	WCT 25SQ×1C×Welding rod holder	20	200	278	318	150	400	230	430	150	27,6	
ARCA-2530	WCT 25SQ×1C×Welding rod holder	30	200	278	318	150	400	230	430	150	37	
ARCA-3520	WCT 35SQ×1C×Welding rod holder	20	300	278	318	150	400	230	430	150	32,2	
ARCA-3530	WCT 35SQ×1C×Welding rod holder	30	300	278	318	150	450	260	485	150	41	
ARCA-7020	WCT 70SQ×1C×Welding rod holder	20	500	278	318	150	500	290	540	200	42	



ARC-M Series

- Application : Electric welding site (General industrial site, Lab site and etc.)
- Features : Solid frame, Manual rewind, Welding rod holder mounted type
- Installation : Floor-mounted

Model	Cable		Allowable Current (A)	External Dimensions (mm)							Weight (kg)	Remark
	Cable Specifications	L (M)		A	B	C	D	E	F	G		
ARCM-2520	WCT 25SQ×1C×Welding rod holder	20	200	278	318	150	400	230	430	150	21,5	
ARCM-2530	WCT 25SQ×1C×Welding rod holder	30	200	278	318	150	400	230	430	150	30	
ARCM-3520	WCT 35SQ×1C×Welding rod holder	20	300	278	318	150	400	230	430	150	22	
ARCM-3530	WCT 35SQ×1C×Welding rod holder	30	300	278	318	150	450	260	485	150	31	
ARCM-7020	WCT 70SQ×1C×Welding rod holder	20	500	278	318	150	500	290	540	200	43	



This arc welding reel is very effective to workers' fatigue and to prevent industrial accidents when deploying and collecting heavy single cables before and after work at the site where the CO² welding machine is use, such as machine assembly sites and shipyards, and it has an excellent economic efficiency.

The multi-swivel function rotates the integrated cable of power, control and gas and rewinds with electric motor power. Wired and wireless options on demand.

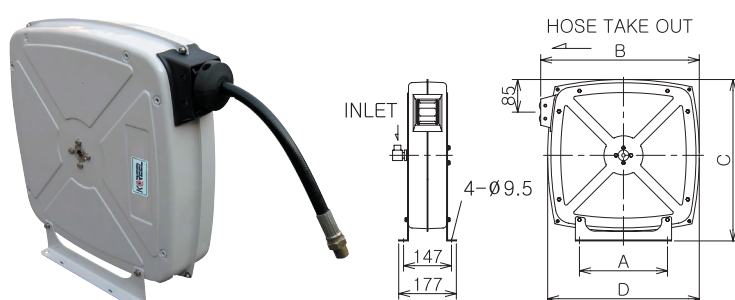
- Application : All CO² welding sites (heavy industry welding site, special welding site, Lab site and etc.)
- Features : Solid frame, Motor rewind. Optional wired and wireless controller
- Mounted location : Floor-mounted

Oil, Grease & High Pressure Hose Reel

EOR /EGR / SJ
RHA / RHA-G

- It is usually used for the supply lines of high pressed grease and all sorts of lubricating oil.
- It is well-designed so that oil may not leak or change rolling capacity by employing high pressed rubber hose and special spring even if it is used for long time. And it is user friendly equipment made as simply as possible.
- It heightens work efficiency and keeps work places tidy.

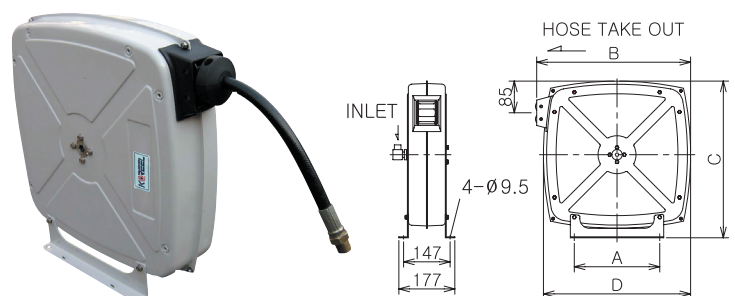
It is usually used for the supply lines of high pressed grease and all sorts of lubricating oil. Structured with a high pressed rubber hose and a special spring in a sealed case made of steel, it is not only strong but also its appearance looks neat. It is well-designed so that oil may not leak or change rolling capacity even if it is used for long time. And it is user friendly equipment made as simply as possible. It heightens work efficiency and keeps work places tidy.



EOR Series(Material : Steel case)

- Application : Car service center, Petrol station, Oil depots of industrial sites
- Features : Compact appearance, Free installation
- Installation : Wall, Ceiling (Within 4M height, If installed over 4M, it could not rewind.)

Model	Hose			W.P Max (kg/cm ²)	External Dimensions (mm)				Weight (kg)
	Size	I.D (mm)	L (M)		A	B	C	D	
EOR-610	1/4" ×1W	6,4	10	60	270	486	495	465	16
EOR-910	3/8" ×1W	9,0	10	60	270	486	495	465	19,5
EOR-1310	1/2" ×1W	13	10	60	270	486	495	465	22

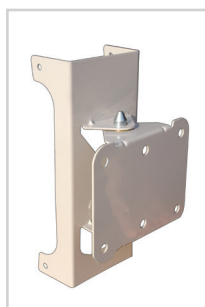


EGR Series(Material : Steel case)

- Application : Large-sized car service center, Manufacturing and repairing heavy machinery, Grease supply lines of steel mills
- Features : Compact appearance, Free installation
- Installation : Wall, Ceiling (Within 4M height, If installed over 4M, it could not rewind.)

Model	Hose			W.P Max (kg/cm ²)	External Dimensions (mm)				Weight (kg)
	Size	I.D (mm)	L (M)		A	B	C	D	
EGR-610	1/4" ×2W	6,4	10	280	270	486	495	465	16
EGR-615	1/4" ×2W	6,4	15	280	270	486	495	465	18
EGR-910	3/8" ×2W	6,4	10	280	270	486	495	465	19,5

Sorts of Bracket



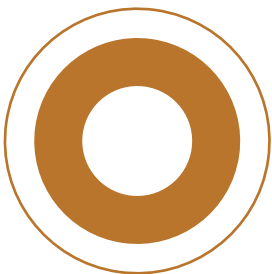
(SW) Left and right swing type
(option)



(F) Wall-fixed type
(basic)



(T) Ceiling-fixed type
(option)



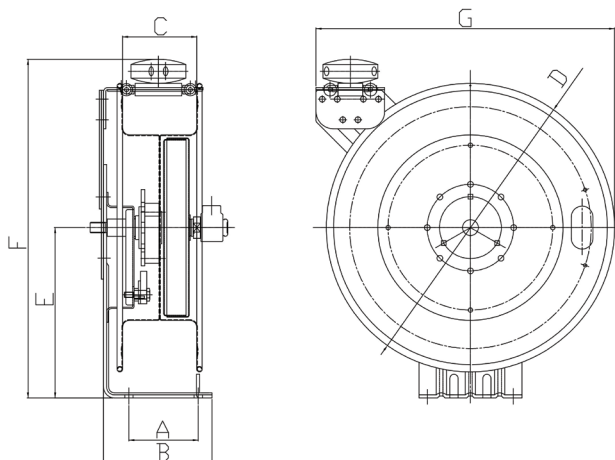
Oil, Grease & High Pressure Hose Reel

Open Type



SJ Series (Oil Reel)

- Application : Construction site, industrial site, Laboratory
- Feature : Compact size, Automatic rewind, Single steel frame
- Installation : Wall, Ceiling



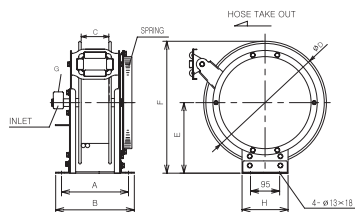
Model	Hose			W.P Max (kg/cm ²)	External Dimensions (mm)							Weight (kg)
	Material	I,D (mm)	L (M)		A	B	C	D	E	F	G	
SRHA-610G	1/4" X 2W	6,4	10	350	101	158	105	Ø420	248	493	435	19
SRHA-615G	1/4" X 2W	6,4	15	350	101	158	105	Ø420	248	493	435	21
SRHA-620G	1/4" X 2W	6,4	20	350	101	158	110	Ø500	288	578	517	23
SRHA-910	3/8" X 1W	9,5	10	158	101	158	105	Ø420	248	493	435	19
SRHA-915	3/8" X 1W	9,5	15	158	101	158	105	Ø420	248	493	435	20
SRHA-920	3/8" X 1W	9,5	20	158	101	158	110	Ø500	288	578	517	25

Oil, Grease & High Pressure Hose Reel

Open Type



RWA&RHA&RA - TYPE(32-1,43-2,48-1)

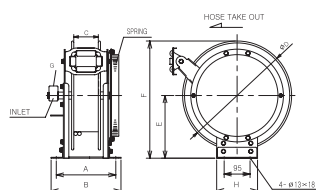


RHA Series

- Application : Car service center, Industrial site, Steel mills, Oil depots of power plants
- Features : Solid frame, High durability seals, Powerful spring
- Installation : Wall, Floor (Within 4M height, If installed over 4M, it could not rewind.)

Model	Hose			W.P Max (kg/cm ²)	External Dimensions (mm)								Weight (kg)
	Size	I.D (mm)	L (M)		A	B	C	D	E	F	G	H	
RHA-610	1/4" x1W	6,4	10	190	216	256	90	400	230	430	PT1/4"	150	16,5
RHA-615	1/4" x1W	6,4	15	190	216	256	90	400	230	430	PT1/4"	150	19
RHA-620	1/4" x1W	6,4	20	190	236	276	110	400	230	430	PT1/4"	150	21,3
RHA-625	1/4" x1W	6,4	25	190	236	276	110	450	260	485	PT1/4"	150	25,8
RHA-630	1/4" x1W	6,4	30	190	236	276	110	450	260	485	PT1/4"	150	28
RHA-910	3/8" x1W	9,5	10	150	216	256	90	400	230	430	PT3/8"	150	22
RHA-915	3/8" x1W	9,5	15	150	236	276	110	400	230	430	PT3/8"	150	24
RHA-920	3/8" x1W	9,5	20	150	236	276	110	450	260	485	PT3/8"	150	27
RHA-925	3/8" x1W	9,5	25	150	278	318	150	500	290	540	PT3/8"	200	31,5
RHA-930	3/8" x1W	9,5	30	150	278	318	150	500	290	540	PT3/8"	200	35
RHA-1310	1/2" x1W	12,5	10	140	278	318	150	400	230	430	PT1/2"	150	24
RHA-1315	1/2" x1W	12,5	15	140	278	318	150	400	230	430	PT1/2"	150	26
RHA-1320	1/2" x1W	12,5	20	140	278	318	150	450	260	485	PT1/2"	150	32
RHA-1325	1/2" x1W	12,5	25	140	278	318	150	500	290	540	PT1/2"	200	36
RHA-1330	1/2" x1W	12,5	30	140	278	318	150	500	290	540	PT1/2"	200	38
RHA-1910	3/4" x1W	19	10	80	338	378	210	450	290	515	PT3/4"	200	34
RHA-1915	3/4" x1W	19	15	80	338	378	210	450	290	515	PT3/4"	200	37
RHA-1920	3/4" x1W	19	20	80	338	378	210	500	290	540	PT3/4"	200	40
RHA-1925	3/4" x1W	19	25	80	338	378	210	550	315	590	PT3/4"	200	45
RHA-1930	3/4" x1W	19	30	80	338	378	210	550	315	590	PT3/4"	200	48
RHA-2510	1" x1W	25	10	70	338	378	210	450	290	515	PT1"	200	36
RHA-2515	1" x1W	25	15	70	408	448	280	500	315	565	PT1"	200	39
RHA-2520	1" x1W	25	20	70	408	448	280	500	315	565	PT1"	200	44
RHA-2525	1" x1W	25	25	70	408	448	280	550	345	620	PT1"	200	44

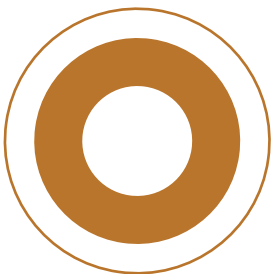
RWA&RHA&RA - TYPE(32-1,43-2,48-1)



RHA-G Series

- Application : Large-sized car service center, Manufacturing heavy machinery, Grease supply lines of steel mills
- Features : Solid frame, High durability seals, Powerful spring
- Installation : Wall, Floor (Within 4M height, If installed over 4M, it could not rewind.)

Model	Hose			W.P Max (kg/cm²)	External Dimensions (mm)								Weight (kg)
	Size	I.D (mm)	L (M)		A	B	C	D	E	F	G	H	
RHA-610G	1/4" x2W	6,4	10	350	216	256	90	400	230	430	PT1/4"	150	16,5
RHA-615G	1/4" x2W	6,4	15	350	216	256	90	400	230	430	PT1/4"	150	19
RHA-620G	1/4" x2W	6,4	20	350	236	276	110	400	230	430	PT1/4"	150	21,3
RHA-625G	1/4" x2W	6,4	25	350	236	276	110	450	260	485	PT1/4"	150	25,8
RHA-630G	1/4" x2W	6,4	30	350	236	276	110	450	290	515	PT1/4"	200	28
RHA-910G	3/8" x2W	9,5	10	280	216	256	90	400	230	430	PT3/8"	150	27
RHA-915G	3/8" x2W	9,5	15	280	236	276	110	450	260	485	PT3/8"	150	29
RHA-920G	3/8" x2W	9,5	20	280	236	276	110	450	260	485	PT3/8"	150	33
RHA-925G	3/8" x2W	9,5	25	280	278	318	150	500	290	540	PT3/8"	200	38
RHA-930G	3/8" x2W	9,5	30	280	278	318	150	500	290	540	PT3/8"	200	43



Oil, Grease & High Pressure Hose Reel **Open Type**

Twin pedestal reel(Compact Series)

RHAT range of steel reels

Quality powder coated steel construction


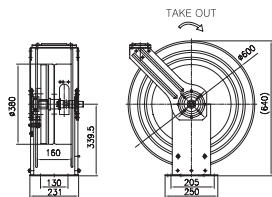

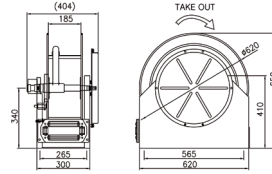

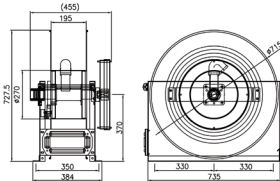

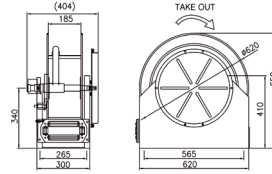

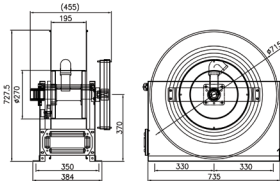
High Quality hose and fittings

Viton O rings

Narrow face dimensions

Industry common footprints

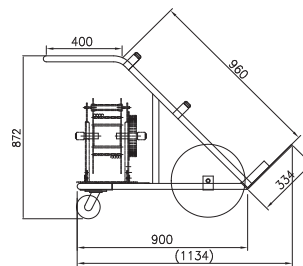
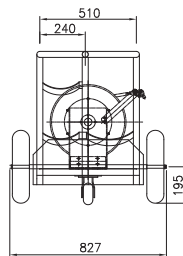


Reference Drawing	Model No	Specification	
		W,P(PSI)	Hose specification
 	RHAT-915G	4000 psi	2wire rubber hose id 3/8" x 15m for Grease use
 	RHAT-1315	2000 psi	1wire rubber hose id 1/2" x 15m for diesel use
 	RHAT-1915	1250 psi	1wire rubber hose id 3/4" x 15m for diesel use
 	RHAT-2515	1000 psi	1wire rubber hose id 1" x 15m for diesel use
 	RHAT-3815	35 bar (500 psi)	1wire rubber hose id 1*1/2" x 15m for diesel use

Oxygen, LPG Gas Hose Reel

RGCA / RGA-SK / RGM-SK

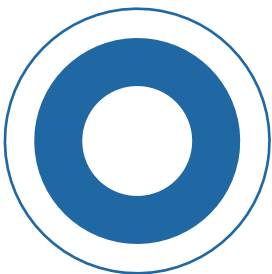
Gas hose Reel helps to handle the oxygen and LPG(or acetylene gas) containers safely at work sites and prevent negligent accidents. It is designed to load any gas containers on the carriage so as not to fall down. There is no gas leakage either at maximum pressure(15kg/cm²) or at minimum pressure and then its safety is guaranteed. It can be organized simply.



Utility model patent No.0164156
Technologically certified product

RGCA Series

Model	Carriage Specifications		Gas Hose Specifications				Rewind Method	Remark
	Pipe Specifications	Wheel Specification	Inner / Outer Diameter (mm)	L (M)	W,P Max (kg/cm ²)	Material		
RGCA-820	Ø32×1,4t	16" Air & 6" Rotation	Ø8×Ø16	20	10	Rubber	Automatic Rewind	
RGCA-825	Ø32×1,4t	16" Air & 6" Rotation	Ø8×Ø16	25	10	Rubber	Automatic Rewind	
RGCA-830	Ø32×1,4t	16" Air & 6" Rotation	Ø8×Ø16	30	10	Rubber	Automatic Rewind	



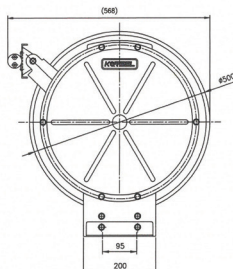
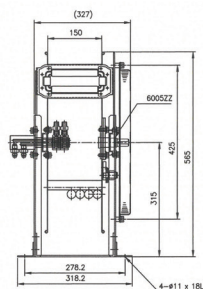
Gas Hose Reel

Oxygen, LPG Gas Hose Reel

In the case of the existing twin hose, it is a two-line hose when used in the field, it is difficult to use, which reduces work efficiency due to fatigue between tasks.

In the case of the new Single typed Gas Hose Reel, due to two rows of hoses are composed of one round hose, it can be reduce fatigue in any working condition and environment.

In addition, it can be rewound smoothly on the reel even when the hose is aligned after work.

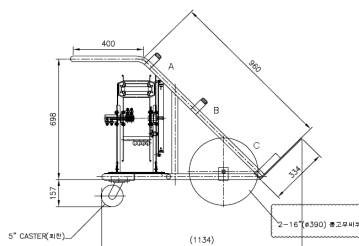


RGA- Series

(Automatic rewind)

- Application : Gas welding and cutting
- Features : Lightweight hose reduces worker fatigue, Flexible hose reduces wrist fatigue for workers during refraction, Smoothly rewound on the reel when the hose is collected after work due to the single rounded hose.
- Mounted location : Wall and Floor mounted

Model	Hose				W.P Max. (kg/cm ²)	External Dimensions (mm)								Remark
	Material	I.D(Ø)	O.D(Ø)	L (M)		A	B	C	D	E	F	G	H	
RGA-830S	Inside : Nylon 12, Outside : Flame Retardant Urethane	5,6	8	30	10	327	318,2	150	500	315	565	PT1/4"	200	36
RGA-850S	Inside : Nylon 12, Outside : Flame Retardant Urethane	5,6	8	50	10	338,4	376,4	210	500	290	540	PT1/4"	200	48



RGCA- Series

(Automatic rewind)

- Application : Gas welding and cutting
- Features : Solid stand frame, Automatic rewind
- Mounted location : Floor-mounted

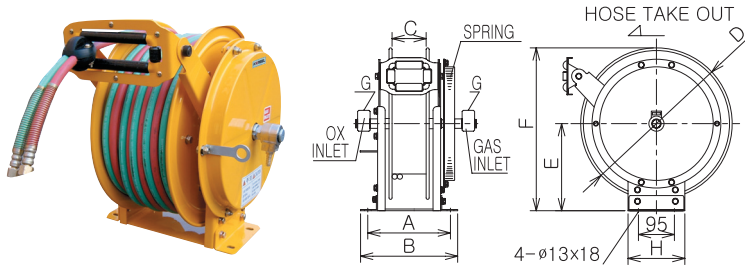
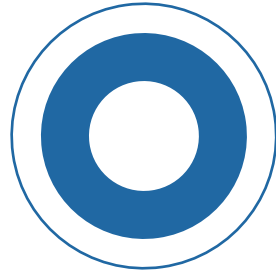
Model	Carriage Specifications			Gas Hose Specifications				Remark
	Pipe Specifications	Wheel Specifications	ID · OD	L (M)	W.P (kg/cm ²)	Material	Winding Method	
RGCA-13830 SL	Ø32 x 1,4T	6"Rubber 6"Rotation	Ø9 x Ø12	30	10	Inside : Nylon 12, Outside : Flame Retardant Urethane	Auto rewind	For Mid-pressure
RGCA-13850 SL	Ø32 x 1,4T	6"Rubber 6"Rotation	Ø9 x Ø12	50	10	Inside : Nylon 12, Outside : Flame Retardant Urethane	Auto rewind	For Mid-pressure
RGCA-13860 SL	Ø32 x 1,4T	6"Rubber 6"Rotation	Ø9 x Ø12	60	10	Inside : Nylon 12, Outside : Flame Retardant Urethane	Auto rewind	For Mid-pressure



Hose Specifications				W.P Max. (kg/cm ²)
Material	I.D(Ø)	O.D(Ø)	L (M)	
Inside : Nylone 12, Outside : Flame Retardant Urethane	5,6	8	30	10
Inside : Nylone 12, Outside : Flame Retardant Urethane	5,6	8	50	10
Inside : Nylone 12, Outside : Flame Retardant Urethane	5,6	8	60	10

Gas Hose Reel

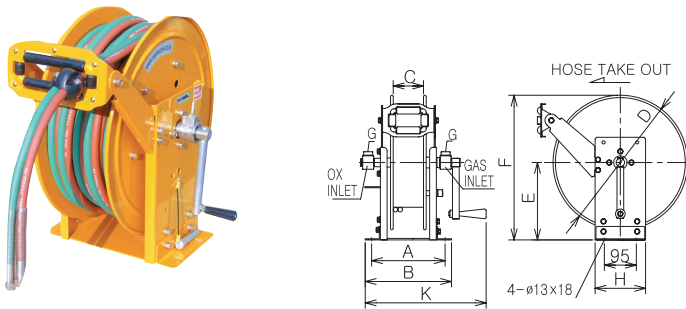
Open Type



RGA-SK Series

- Application : Gas welding, Cutting
- Features : Solid frame, Built-out spring
- Installation : Wall, Floor (Within 3M height, If installed over 4M, it could not rewind.)

Model	Hose			W.P Max (kg/cm ²)	External Dimensions (mm)								Weight (kg)
	Material	I.D (mm)	L (M)		A	B	C	D	E	F	G	H	
RGA-620	Rubber Hose	6	20	10	238	278	110	400	230	430	PT1/4"	150	24
RGA-625	Rubber Hose	6	25	10	238	278	110	450	260	485	PT1/4"	150	29
RGA-630	Rubber Hose	6	30	10	278	318	150	450	260	485	PT1/4"	150	32
RGA-815	Rubber Hose	8	15	10	278	318	150	400	230	430	PT1/4"	150	24,7
RGA-820	Rubber Hose	8	20	10	278	318	150	450	260	485	PT1/4"	150	28
RGA-825	Rubber Hose	8	25	10	278	318	150	500	290	540	PT1/4"	150	33
RGA-830	Rubber Hose	8	30	10	278	318	150	500	290	540	PT1/4"	150	36



RGM-SK Series

Manual Rewind

- Application : Gas welding, Cutting
- Features : Solid stand frame, Manual rewind
- Installation : Fixed to the floor

Model	Hose			W,P Max (kg/cm ²)	External Dimensions (mm)									Weight (kg)
	Material	I,D (mm)	L (M)		A	B	C	D	E	F	G	H	K	
RGM-620	Rubber Hose	6	20	10	238	278	110	400	230	430	PT1/4"	150	380	20
RGM-630	Rubber Hose	6	30	10	278	318	150	450	260	485	PT1/4"	150	420	23
RGM-640	Rubber Hose	6	40	10	278	318	150	500	290	540	PT1/4"	150	420	25
RGM-650	Rubber Hose	6	50	10	338	378	210	450	260	485	PT1/4"	150	480	32
RGM-820	Rubber Hose	8	20	10	278	318	150	450	260	485	PT1/4"	150	420	21,3
RGM-830	Rubber Hose	8	30	10	278	318	150	500	290	540	PT1/4"	150	420	27,8
RGM-840	Rubber Hose	8	40	10	338	378	210	500	290	540	PT1/4"	150	480	33
RGM-850	Rubber Hose	8	50	10	338	378	210	550	315	590	PT1/4"	200	480	39



Exhaust Hose Reel

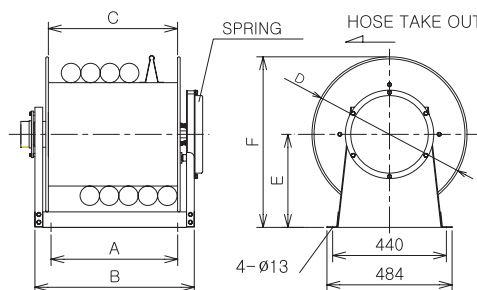
Open Type

It is a necessary item to keep work place of car service center clean and comfortable. It functions to inhale hot exhaust gas and then fume out through a connected pipe. It is the economical product which is quite adequate for small-sized work places.

WGS Series

Spring rewind excluding blower

- Application : Small-sized car service center, Laboratory, School labs
- Features : Spring rewind, Flexible high-temperature hose
- Installation : Wall, Ceiling (Within 4M height, If installed over 4M, it could not rewind.)

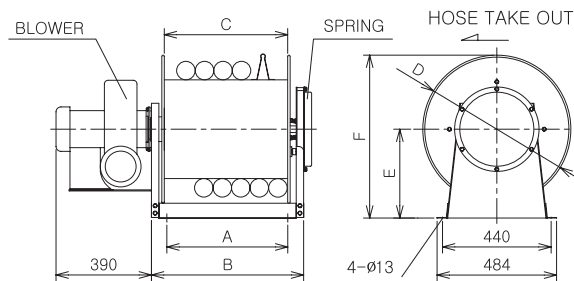


Model	Hose			External Dimensions (mm)						Weight (kg)
	I.D (mm)	Maximum Temperature	L (M)	A	B	C	D	E	F	
WGS-7507	75	180 °	7,5	590	720	600	600	360	660	48
WGS-7510	75	180 °	10	740	870	750	600	360	660	53,5
WGS-1007	100	180 °	7,5	640	770	650	650	400	725	54
WGS-1010	100	180 °	10	790	920	800	650	400	725	60

WGS-B Series

Spring rewind including blower

- Application : Small-sized car service center, Laboratory, School labs
- Features : Spring rewind, Blower-attached type, Flexible high-temperature hose
- Installation : Wall, Ceiling (Within 4M height, If installed over 4M, it could not rewind.)



Model	Hose			External Dimensions (mm)						Weight (kg)
	I.D (mm)	Maximum Temperature	L (M)	A	B	C	D	E	F	
WGS-7507B	75	180 °	7,5	590	720	600	600	360	660	48
WGS-7510B	75	180 °	10	740	870	750	600	360	660	53,5
WGS-1007B	100	180 °	7,5	640	770	650	650	400	725	54
WGS-1010B	100	180 °	10	790	920	800	650	400	725	60

Exhaust Hose Reel Open Type

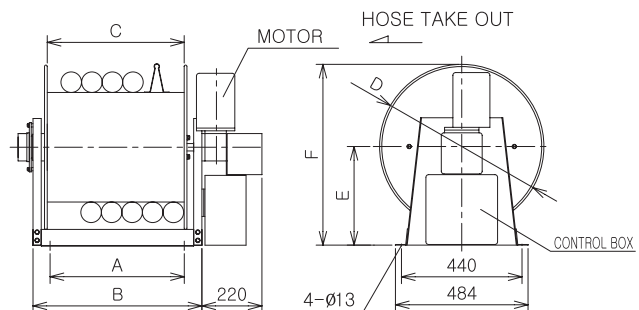
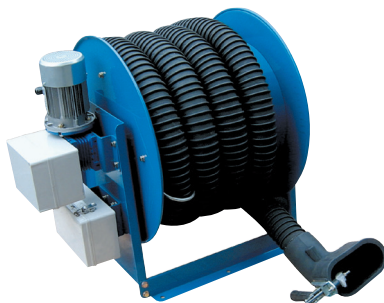


It is a necessary item to keep a work place of a car service center clean and comfortable. It functions to inhale hot exhaust gas and then fume out through a connected pipe. As an electric motor driven type, adopting an integrated control circuit with powerful motor drive, it is easy to maintain and repair. In addition, a multipurpose muffler nozzle is attached.

WGM Series

Motor driven type (Excluding blower)

- Application : Small-sized car service center, Laboratory, School labs
- Features : Spring rewind, Blower-attached type, Flexible high-temperature hose
- Installation : Wall, Ceiling (Within 4M height, If installed over 4M, it could not rewind.)

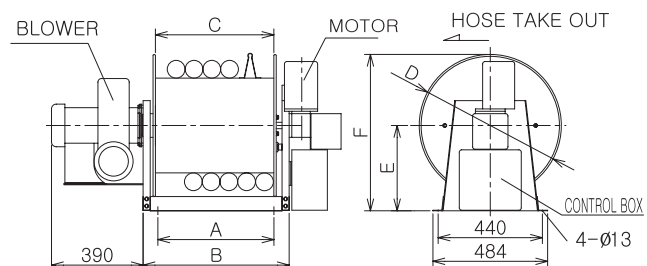


Model	Hose			External Dimensions (mm)						Weight (kg)	Voltage
	I.D (mm)	Maximum Temperature	L (M)	A	B	C	D	E	F		
WGM-7507	75	180 °	7,5	590	720	600	600	360	660	52	Three Phases 220V/ 380V
WGM-7510	75	180 °	10	740	870	750	600	360	660	58	Three Phases 220V/ 380V
WGM-1007	100	180 °	7,5	640	770	650	650	400	725	73,5	Three Phases 220V/ 380V
WGM-1010	100	180 °	10	790	920	800	650	400	725	81	Three Phases 220V/ 380V

WGM-B Series

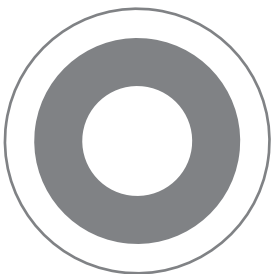
Motor driven type (Including blower)

- Application : Car service center, Automobile Laboratory, School labs
- Features : Automatic motor driven type, Blower, Flexible high-temperature hose
- Installation : Wall, Ceiling (Within 4M height, If installed over 4M, it could not rewind.)



Model	Hose			External Dimensions (mm)						Weight (kg)	Voltage
	I.D (mm)	Maximum Temperature	L (M)	A	B	C	D	E	F		
WGM-7507B	75	180 °	7,5	590	720	600	600	360	660	55	Three Phases 220V/ 380V
WGM-7510B	75	180 °	10	740	870	750	600	360	660	61	Three Phases 220V/ 380V
WGM-1007B	100	180 °	7,5	640	770	650	650	400	725	76,5	Three Phases 220V/ 380V
WGM-1010B	100	180 °	10	790	920	800	650	400	725	84	Three Phases 220V/ 380V

※ A Remote control is optional.



Exhaust Hose Reel

Exhaust Hose Rail System & Accessories

Exhaust Hose Rail system has strengths in its flexible use and high efficiency comparing to other fixed exhaust hose reels. Equipping electrical or manual hose reel as much as needed on a linear-typed rail, you can handle it quite freely even while moving. Rail duct fumes out exhaust gas to outdoor and sliding rail braid consists of high-temperature rubber braid so there is no leakage. Electrical exhaust host reel functions optimally as the current collector of power and control are installed in it.

Rail Series

- Application : Auto factories, Service Center, Laboratory, School labs
- Features : Frame by each 5M, Electrical type, Manual Type
- Installation : Ceiling (Within 5M height, If installed over 4M, it could not rewind.)

Model	Rail			Remark
	I.D (mm)	Maximum Temperature	Basic Length	
EHR-500	75	180 °	5M	Non-Power Type
EHR-500P	100	180 °	5M	Electrical Type

High-temperature Exhaust Hose

- It has excellent flexibility as using natural materials and can inhale hot exhaust gas.
- Flexion radius is small so it is easy to rewind and use.
- It is divided into 2 kinds, depending on the temperature and situation in use.

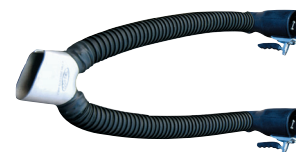


- Application : Auto factory, Service Center, Laboratory, School labs
- Features : Frame by each 5M, Electrical type, Manual Type
- Installation : Ceiling (Within 5M height, If installed over 4M, it could not rewind.)

Model	Hose			Weight (kg)	Remark
	I.D (mm)	Maximum Temperature	L (M)		
CR-MP75	75	180 °	1m	—	Circular Type
CR-MP100	100	180 °	1m	—	Circular Type
CR-MP125	125	180 °	1m	—	Circular Type
CR-HP75	75	180 °	1m	—	Oval Type
CR-HP100	100	180 °	1m	—	Oval Type
CR-HP125	125	180 °	1m	—	Oval Type

Y Branch Hose

In case of a dual muffler car, detachable Y Branch hose can be used by being employed to a single hose reel nozzle. It is very easy to keep after use.

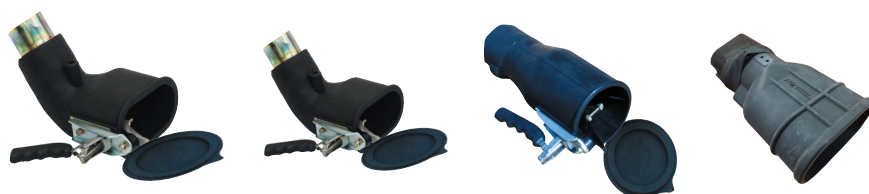


Model	Hose			Weight (kg)	Remark
	I.D (mm)	Maximum Temperature	L (M)		
YBC-021	75	180 °	1m+1m	—	Circular Nozzle
YBC-02	75	180 °	1m+1m	—	Oval Nozzle
BHC-7502	75	180 °	1m+1m	—	Circular Nozzle
BHC-1002	100	180 °	1m+1m	—	Circular Nozzle
BHC-12502	125	180 °	1m+1m	—	Circular Nozzle

Exhaust reel nozzle

Exhaust reel nozzle

Oval type-Large, Small / Circular type-Large, Small(Heat-resistant rubber)



(Material : EPDM)

Other accessory

QM-5(Implantable socket in bumper)

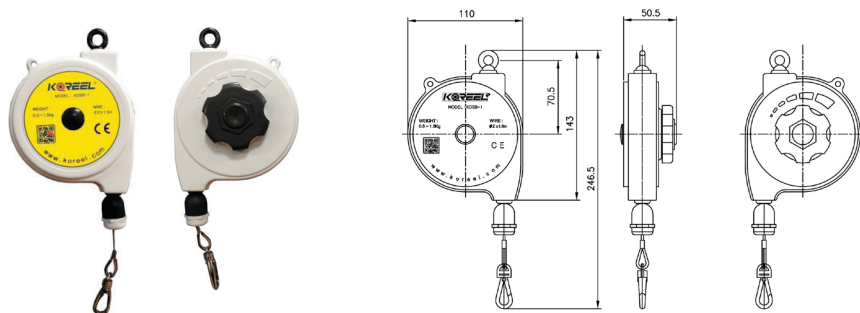


Spring Balancer

Spring Balancer

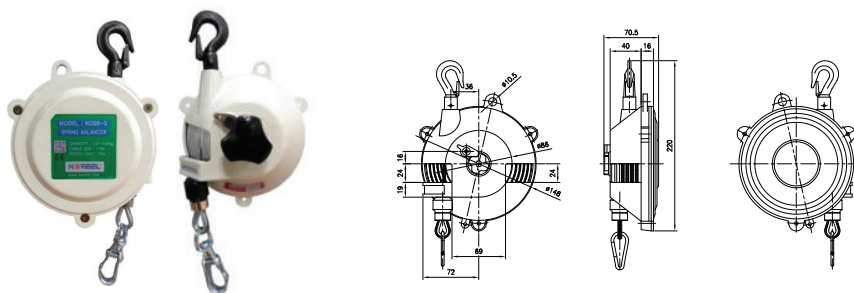


Supplementary equipment to reduce the weight of work tools.



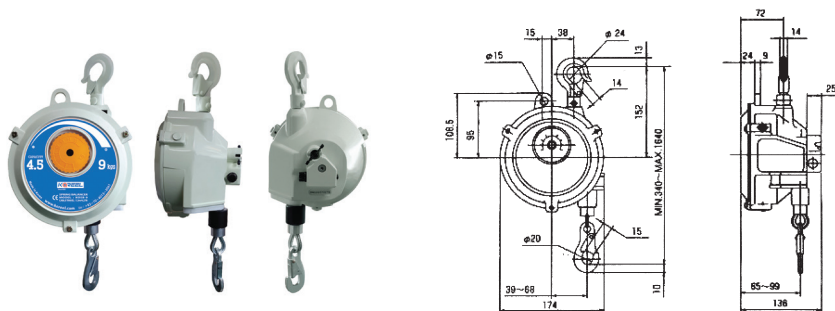
KOSB-1

Model	Range Of Application (kg)	Wire		Weight (kg)	Packing
		External Diameter (Ø)	L (M)		
KOSB-1	0,5~1,5	2mm Coated Wire	1,8	0,45	1Box X 1EA



KOSB-3,5

Model	Range Of Application (kg)	Wire		Weight (kg)	Packing
		External Diameter (Ø)	L (M)		
KOSB-3	1,0 ~ 3,0	3mm Coated Wire	1,8	1,55	1Box X 1EA
KOSB-5	3,0 ~ 5,0	3mm Coated Wire	1,8	1,65	1Box X 1EA



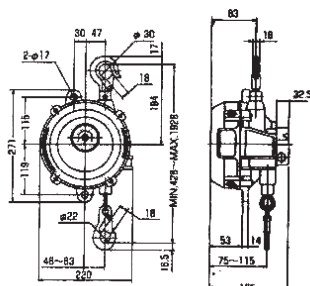
KOSB-9, 15

Model	Range Of Application (kg)	Wire		Weight (kg)	Packing
		External Diameter (Ø)	L (M)		
KOSB-9	4,5~9,0	4mm Coated Wire	1,3	3,7	1Box X 1EA
KOSB-15	9,0~15,0	4mm Coated Wire	1,3	3,8	1Box X 1EA



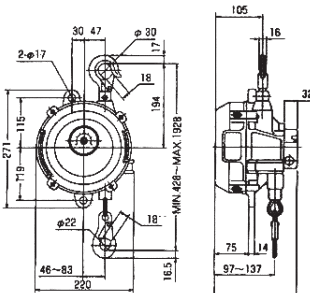
Spring Balancer

Spring Balancer



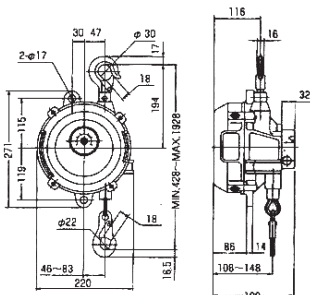
KOSB-22, 30

Model	Range Of Application (kg)	Wire		Weight (kg)	Packing
		External Diameter (Ø)	L (M)		
KOSB-22	15,0~22,0	4,8mm Coated Wire	1,8	7,7	1Box X 1EA
KOSB-30	22,0~30,0	4,8mm Coated Wire	1,8	8,0	1Box X 1EA



KOSB-40, 50

Model	Range Of Application (kg)	Wire		Weight (kg)	Packing
		External Diameter (Ø)	L (M)		
KOSB-40	30,0~40,0	4,8mm Coated Wire	1,8	9,8	1Box X 1EA
KOSB-50	40,0~50,0	4,8	1,8	10,4	1Box X 1EA



KOSB-60, 70, 80

Model	Range Of Application (kg)	Wire		Weight (kg)	Packing
		External Diameter (Ø)	L (M)		
KOSB-60	50,0~60,0	4,8mm Coated Wire	1,8	11	1Box X 1EA
KOSB-70	60,0~70,0	4,8mm Coated Wire	1,8	11,5	1Box X 1EA
KOSB-80	70,0~80,0	4,8mm Coated Wire	1,8	12	1Box X 1EA

Spring Balancers (Notice in use)

- Do not dissemble it carelessly. If the spring inside may bounce up when dissembling, there is a risk of injury.
- When you adjust the spring tension, hold spring and hexagonal wrench tightly then turn it. Otherwise, hexagonal wrench can cause the injury.
- Rechet stopper must be fixed tightly without failure.
- When a spring balancer keeps swinging(especially inside of a ship), do fix it using fitting holes bolts.

Air Tube & Hose

Polyurethane,
Polyethylene, Nylon Tube

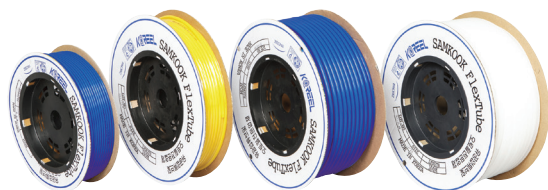


Polyurethane Tube (PUT)

Features and Use

- Available for using between -20°C and 80°C
- Easy plumbing due to high flexibility
- For air pneumatic pressure, Outstanding excellent flexibility
- Excellent weather resistance and flection resistance

Size	External Diameter (mm)	Inner diameter (mm)	W.P (kg/cm ² at 20°C)	Color
4 × 2	4	2	8	Red, Blue, Yellow, Green, Black, Transparency, Blue-Transparency
6 × 4	6	4	8	
8 × 5	8	5	8	
10 × 6,5	10	6,5	8	
12 × 8	12	8	8	
16 × 12	16	12	7	



Polyethylene Tube (PET)

Features and Use

- Non-toxic, available for restaurants and food factories
- High chemical resistant, suitable for chemical pipes
- Outstanding cold resistance, adequate for using in winter

Size	External Diameter (mm)	Inner diameter (mm)	W.P (kg/cm ² at 20°C)	Color
6 × 4	6	4	5	Blue, White, Yellow, Black
8 × 5	8	5	5	
10 × 6,5	10	6,5	5	
12 × 8	12	8	5	
16 × 12	16	12	5	



Nylon Tube (NT)

Features and Use

- High pressure resistance, durability of abrasion and flection resistance
- High chemical resistance, suitable for LPG, LNG and Gas pipes
- High chemical, especially high alkali, resistance

Size	External Diameter (mm)	Inner diameter (mm)	W.P (kg/cm ² at 20°C)	Color
4 × 2	4	2	8	Black, white
4 × 2,5	4	2,5	8	"
6 × 4	6	4	8	"
8 × 6	8	6	8	"
10 × 8	10	8	8	"
12 × 9	12	9	8	"
1/4	6,35	4,57	8	"
3/8	9,53	6,99	8	"
1/2	12,70	9,56	8	"

※ Different colour is custom-built.

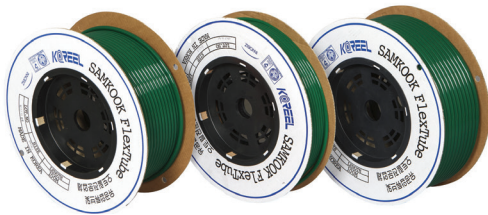


Air Reel Braid Hose

Features and Use

- High flexibility
- Suitable for car service centers and construction sites where using tacker and impact
- Able to use at -20°C ~ 60°C

Size	E,D (mm)	I,D (mm)	W,P (kg/cm ² at 23°C)	Color
10 × 6,5	10	6,5	15	Orange
12 × 8	12	8	"	"
16 × 11	16	11	"	"

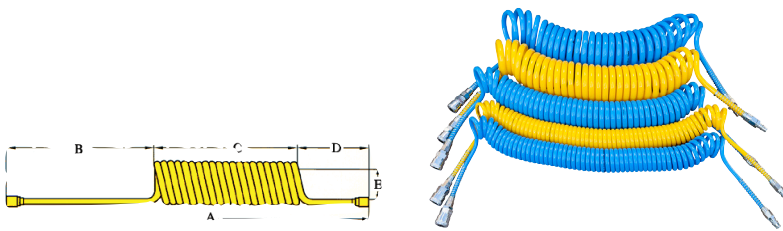


Portable Urethane Soft Hose

Features and Use

- Light and easy use for portable tacker
- Able to use at -20°C ~ 60°C

Size	E,D (mm)	I,D (mm)	W,P (kg/cm ² at 23°C)	Color
8 × 4,5	8	4,5	7	Orange, Green
10 × 6	10	6	7	"
12 × 8	12	8	7	"



PU Coil Hose

(Polyurethane)

Features and Use

- Portable and light
- Cold resistance and impact resistance
- Easy use for air tools, lubricating device, pneumatic tools and tacker works.

Size	E,D (mm)	I,D (mm)	L (M)	A (mm)	B (mm)	C (mm)	D (mm)	E (mm)	W,P (kg/cm ² at 20°C)	Color
8×5×5	8	5	5	1,000	150	430	150	34	8	Yellow
8×5×7,5	8	5	7,5	1,230	150	630	150	34	8	Yellow, Blue
8×5×10	8	5	10	1,400	150	800	150	34	8	Yellow
10×6,5×5	10	6,5	5	1,000	150	400	150	42	8	"
10×6,5×7,5	10	6,5	7,5	1,235	150	635	150	42	8	"
10×6,5×10	10	6,5	10	1,400	150	800	150	42	8	"
12×8×5	12	8	5	990	150	390	150	60	8	"
12×8×7,5	12	8	7,5	1,190	150	590	150	60	8	"
12×8×10	12	8	10	1,380	150	780	150	60	8	"



PE Coil Hose

(Polyethylene)

Features and Use

- Portable and light
- Cold resistance and impact resistance
- Easy use for air tools, lubricating device, pneumatic tools and tacker works.

Size	E,D (mm)	I,D (mm)	L (M)	W,P (kg/cm ² at 20°C)	Color
8×5×5	8	5	5	5	Yellow
8×5×7,5	8	5	7,5	5	"
8×5×10	8	5	10	5	"
10×6,5×5	10	6,5	5	5	"
10×6,5×7,5	10	6,5	7,5	5	"
10×6,5×10	10	6,5	10	5	"
12×8×5	12	8	5	5	"
12×8×7,5	12	8	7,5	5	"
12×8×10	12	8	10	5	"

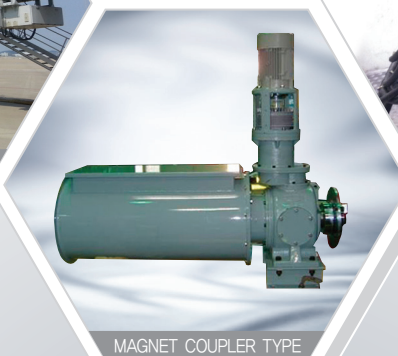
Optional **Made to Order**



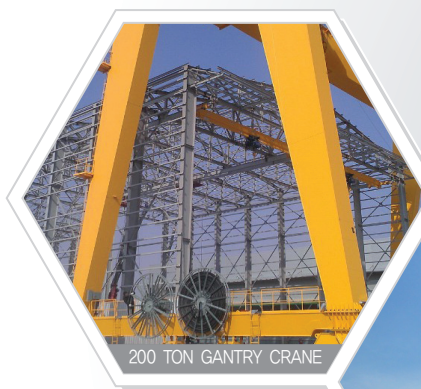
CABLE REEL FOR AVIATION



SLIP RING FOR LLC



MAGNET COUPLER TYPE



200 TON GANTRY CRANE



FOR SHIP-BUILDER CRANE



FOR RTGC(SPEED 130cm/min)



REEL FOR REFUELING AIRCRAFT



LARGE-SIZED HOSE REEL(FOR EXPORT)



CABLE REEL FOR HUB CRANE



Optional **Made to Order**



CABLE REEL FOR CONTAINER SPREADER



WEIGHT TYPE CABLE REEL



SLIP RING FOR LLC



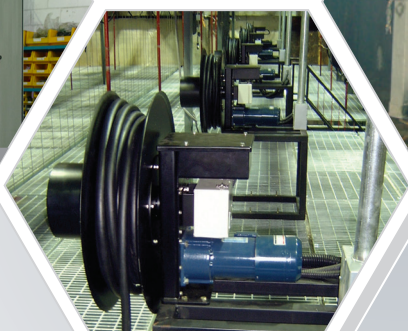
SLIP RING FOR JIB CRANE



SLIP RING FOR JIB CRANE



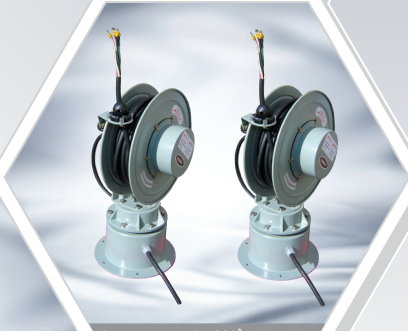
MINING REEL



CABLE REEL FOR STAGE



CABLE REEL FOR CO₂ WELDING



CABLE REEL FOR 360° ROTATION



REFUELING REEL

Change & Feel it

The innovation of industrial reels achieved by Koreel Co., Ltd.
Koreel Co., Ltd. will break fresh ground in industrial reels with the
exceptional quality and the best customer service.



Patents and Technology Certificates



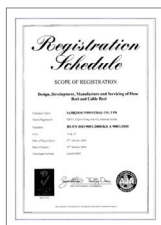
Certificate for
Corporate Research
Institute



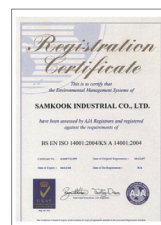
Registration of
Recommended High
Quality Product



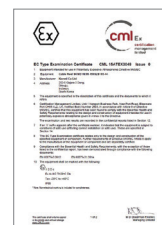
Certificate of
Innovative SME



ISO 9001



ISO 14001



Certificate of ATEX



Certificate of CE



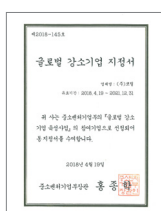
Certificate of IECE



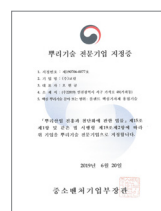
Certificate of DNV



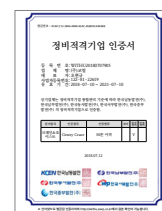
AEO Certificate



Certificate of
Global SME



Certificate Professional
of Material and
Technology Industry



Qualified Company
Certificate



Certificate of
Promising SME in
Export